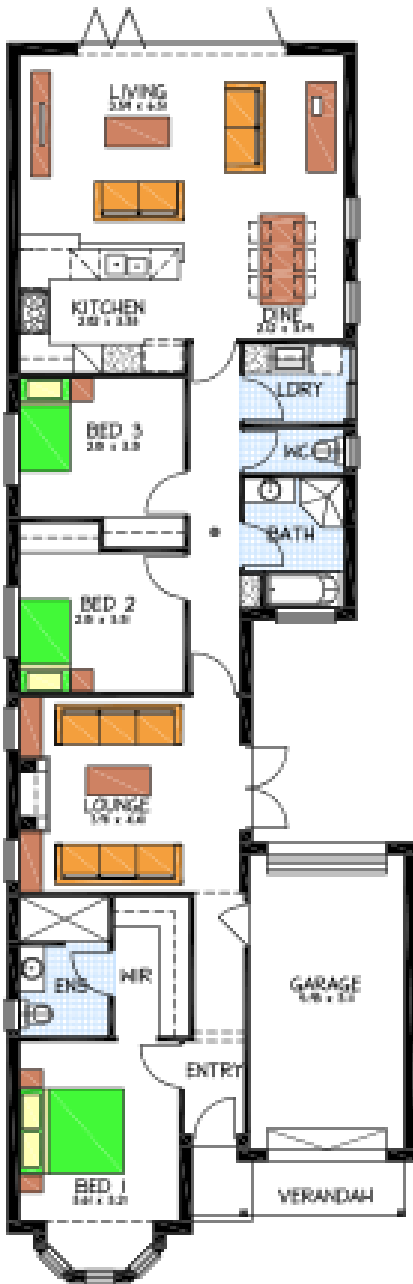


# House & Land Package



## DAVENPORT TERRACE

**FIXED PRICE PACKAGE**

**302 Railway Tce, Taperoo**

Package includes:

- **Rossdale Sovereign Specification**
- **Call Leon to see the modified Davenport 36m2 larger floor plan with alfresco**
- **Planning Approved drawings completed**
- **Ocean Corrosion requirements Included**
- **Davenport Façade as displayed Included**
- **Panel Lift doors included**
- **Insulation also to Internal walls**
- **Instantaneous hot water service**
- **Alfresco to rear of living area Included**
- **Full height tiling to Ens and Bathroom**
- **Full Westinghouse stainless steel**

PACKAGE FROM: **\$496,337.00 INCLUSIVE**

HOME: \$261,337 LAND: \$235,000

Disclaimer: All care has been taken in the preparation of this material. No responsibility is taken for any errors or omissions. Details are subject to change without notification. Images for illustration purposes only. E&EO.

FOR THIS OFFER CALL

**LEON MARGARITIS**

**0402 47 1977**

*Because trust is a must*

[www.rosdalehomes.com.au](http://www.rosdalehomes.com.au)