

House & Land Package

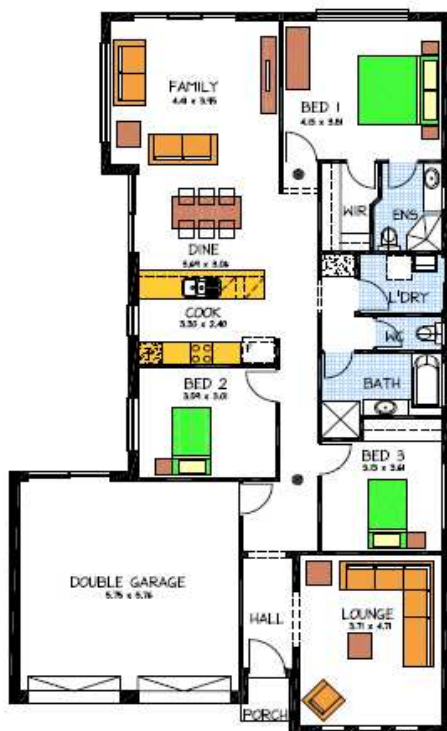


THE KYTON

Lots 16 Onkaparinga Rise

This package includes:

- Rossdale Homes Kyton 147 design built to Select Specifications
- Front elevation is rendered and painted incl. 2 colours along with feature Rusitc Bookleaf Stack Stone to brick pier
- Double Garage with automatic roller doors and internal access
- All services are included along with NBN ready.
- All cabinetry is included with overhead cupboards to Kitchen, built in robe to Bedroom 3 and all Laundry and linen cupboards
- Quality Westinghouse appliances including retracta range-hood
- Instantaneous hot water system
- Ceiling, external and internal wall insulation is all taken care of
- All siteworks including above standard footings and excess soil removal is included
- 2,500 litre slimline rainwater tank plumbed to WC
- Absolute FIXED PRICE CONTRACT



Disclaimer: All care has been taken in the preparation of this material. No responsibility is taken for any errors or omissions. Details are subject to change without notification. Images for illustration purposes only. E&EO.

Call today to find out more....

PACKAGE FROM: \$367,449

HOME: \$183,949 LAND: \$183,500

FOR THIS OFFER CALL

JOHN 0423 337 020

Because trust is a must

www.rossdalehomes.com.au