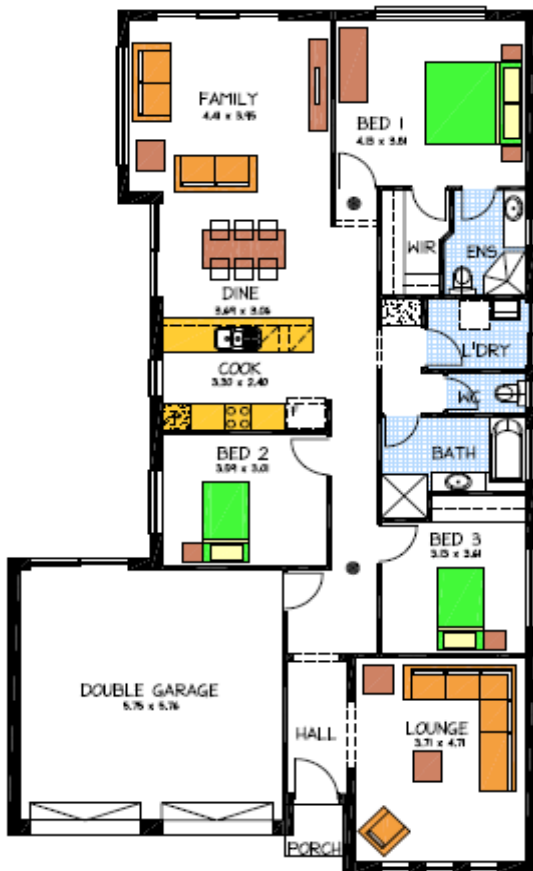


# House & Land Package



## THE KYTON

Lot 180 Nilpena Avenue, Morphettville

### This package includes:

- Large three bedroom home
- 2700 ceilings throughout
- Separate second lounge room
- Ensuite and walk in robe to Bed 1
- Soft Close joinery
- Westinghouse Appliances
- Floor coverings throughout
- Stormwater connection
- NBN Connection
- Generous footings allowance
- Paving to driveway and perimeter path
- 500sq meter of land

PACKAGE FROM: \$526,500

HOME: \$196,500 LAND: \$330,000

Disclaimer: All care has been taken in the preparation of this material. No responsibility is taken for any errors or omissions. Details are subject to change without notification. Images for illustration purposes only. E&EO.

FOR THIS OFFER CALL

TIFFANY: 0422 072 598

*Because trust is a must*

[www.rossdalehomes.com.au](http://www.rossdalehomes.com.au)