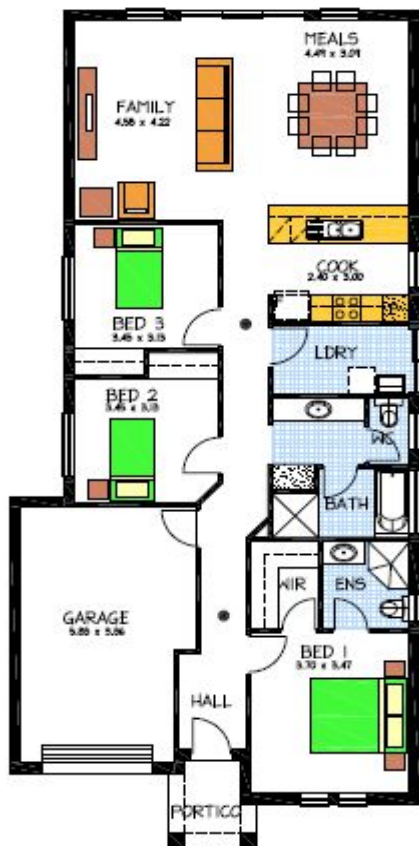


House & Land Package



“Walkers Lane” in trendy McLaren Vale

Lot 3 / 256 Main Road

This package includes:

- 450 m2 of land in the McLaren Vale wine region!
- Convenient location -Walking distance to restaurants, shops and Shiraz walking trail
- Rossdale Homes Marden design with open layout
- Single garage with automatic roller door & internal access
- Master bedroom with Ensuite & Walk in Robe
- Quality Westinghouse appliances to kitchen
- Healthy footings allowance with all soil removal from site
- National Broadband ready
- Front elevation with feature Portico to be rendered and painted
- 100% Absolute fixed price contract with no hidden costs
- 25 year structural warranty
- Quality Guarantee
- More options available. call today to find out more

PACKAGE FROM: \$404,000

Disclaimer: All care has been taken in the preparation of this material. No responsibility is taken for any errors or omissions. Details are subject to change without notification. Images for illustration purposes only. E&EO.

FOR THIS OFFER CALL

DAVE: 04 5050 2571

Because trust is a must

www.rossdalehomes.com.au