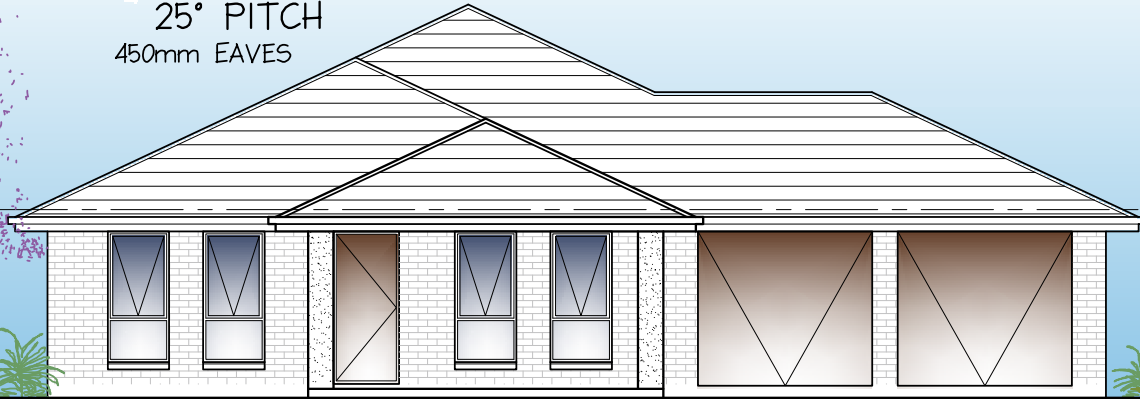


House & Land Package

25° PITCH
450mm EAVES



FRONT ELEVATION

- TO BE FACE BRICK
- RENDERED BRICK PIERS TO PORTICO

Buy with security of absolute **FIXED**
price Contract.

Address: Lots 7 & 8 Coomurra rise, Salisbury heights

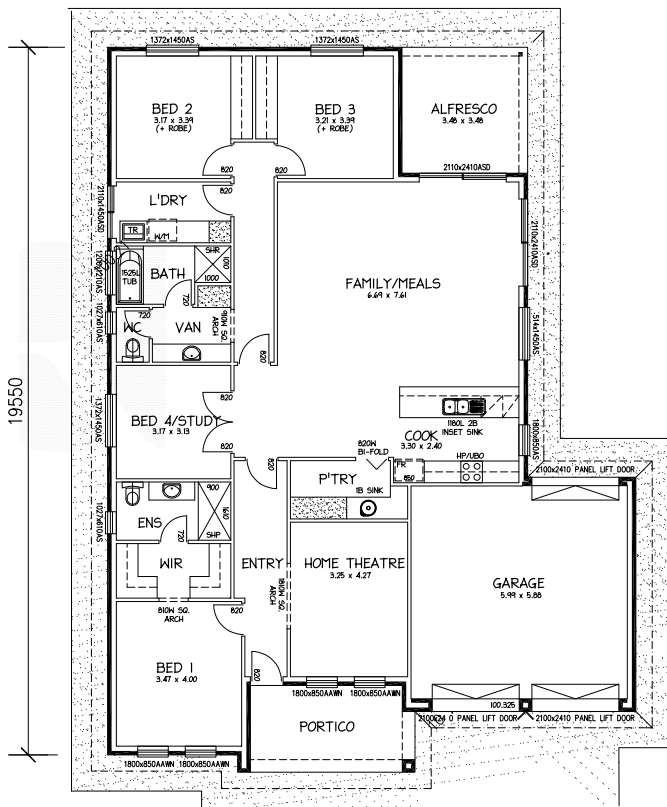
This package includes:

- Generous footings allowance with wind speed and Medium Bushfire requirements
- Rossdale Homes Sovereign spec. with upgraded bathroom fittings, doors etc.
- Reverse cycle Airconditioning
- Floor coverings throughout
- WIR and Robes in bedrooms 2, 3 & 4
- Walk In pantry with shelving and sink
- Pot drawers in kitchen
- Insulation and Cabinetry Included throughout as per plan
- NBN package with USB points etc.
- Westinghouse appliances
- Front façade as per sketch with render to piers, awning windows, panel doors
- 2.7m high ceilings
- Overhead cupboards in kitchen
- Turnkey options available with Fixed price
- Call today for more details

Land: \$318,000

House: 247,254

Package from: \$565,254



Disclaimer: All care has been taken in the preparation of this material. No responsibility is taken for any errors or omissions. Details are subject to change without notification. Images for illustration purposes only. E&EO.

FOR THIS OFFER CALL

SAGAR 0430 466 001

Because trust is a must

www.rossdalehomes.com.au