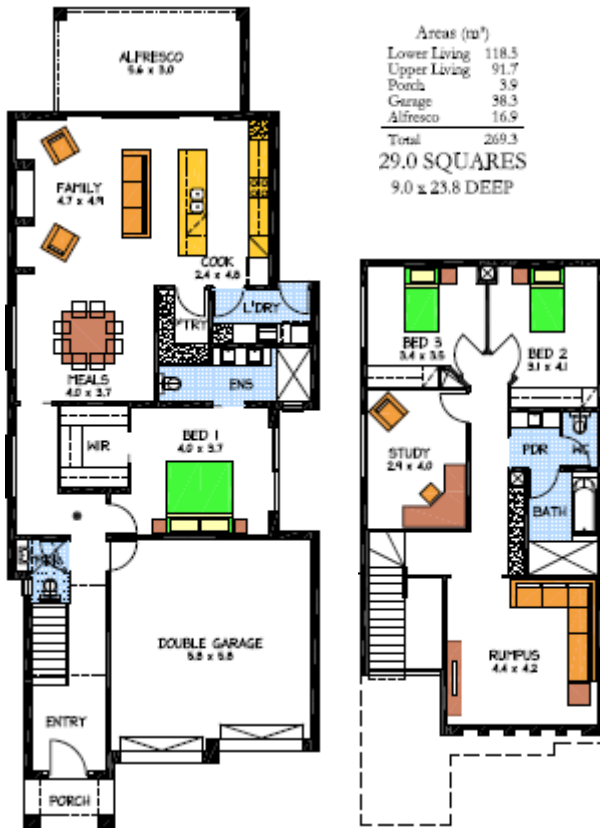




**Rossdale
Homes**

Because trust is a must

House & Land Package



THE HOLDFAST ON DISPLAY AT ST CLAIR

Lot 2 Liverpool Rd, Goolwa

This package includes:

- Rossdale Homes design built to Sov specs
- Double garage with automatic doors
- 4 well sized bedrooms, master with WIR and ensuite
- Front elevation to be rendered and painted
- 2.7m high ceiling levels
- Quality Westinghouse appliances including retracta range-hood set in overhead cupboards to kitchen
- Healthy Footings allowance with all excess soil removed
- **100% Absolute Fixed Price Contract with no hidden costs**

PACKAGE FROM: \$657,765

HOME: \$308,765 LAND: \$349,000

Disclaimer: All care has been taken in the preparation of this material. No responsibility is taken for any errors or omissions. Details are subject to change without notification. Images for illustration purposes only. E&EO.

FOR THIS OFFER CALL

LEON 0402 471 977

Because trust is a must

www.rossdalehomes.com.au