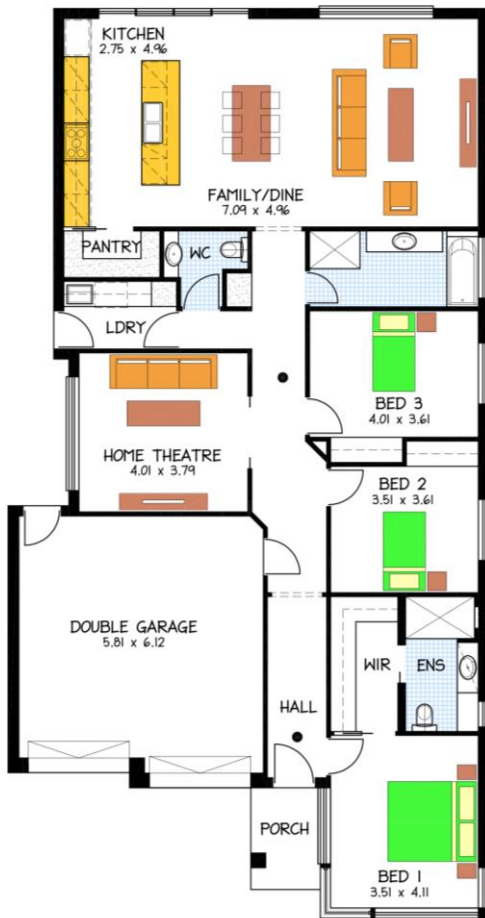


House & Land Package



The Brighton

Lot 492 Hartley Walk, Gawler East

This package includes:

• FIXED PRICE H&L PACKAGE

- Sovereign Specification
- 2.7 high metre ceilings
- NBN Included
- Low Bushfire requirements Included
- Fixed price footings
- Panel Lift doors Included
- Boutique Commercial Windows to front Included
- Insulation to Internal, External Walls & to Roof
- 900 wide appliances Included to kitchen
- Square set ceilings Included to living areas
- 2 Wall Ovens with 2400 High overhead cupboards Included
- Honed Flat Stone to front with render as per plans
- Tiled Niches Included to Ensuite shower
- Peter Evans Undermount sinks Included to stone benchtops
- Split level construction Included per sloping site
- 20mm Caesarstone to kitchen Included
- Built In Robes Included to bedrooms
- Call me today to review the Specification and Inclusions

PACKAGE FROM: **\$420,650.00**

HOME: **\$271,150** LAND: **\$149,500**

Disclaimer: All care has been taken in the preparation of this material. No responsibility is taken for any errors or omissions. Details are subject to change without notification. Images for illustration purposes only. E&EO.

FOR THIS OFFER CALL

LEON: 0402 47 1977

Because trust is a must

www.rossdalehomes.com.au