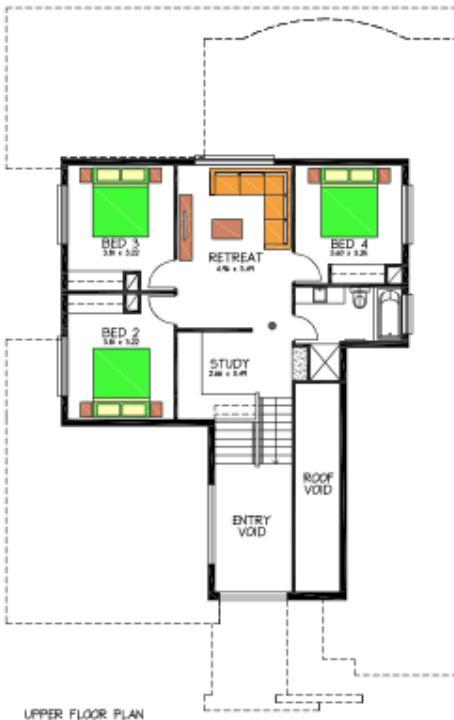


House & Land Package



THE BELLEVUE

Address: Lot 22 Coomurra Rise Salisbury Heights

This package includes:

- Allowance for boundary build and above standard footings/siteworks.
- Panel lift doors with remote controllers to garage.
- Laminate timber flooring to entry, home theatre, kitchen, meals, family and rear hallway
- Carpet to all bedrooms and WIR
- Overhead cupboards in kitchen
- Soft close drawers throughout
- Storm Water
- Pavers to foot paths and driveway
- Reverse Cycle Air Conditioning

PACKAGE FROM: \$893,914

HOME: \$575,914 LAND: \$318,000

Disclaimer: All care has been taken in the preparation of this material. No responsibility is taken for any errors or omissions. Details are subject to change without notification. Images for illustration purposes only. E&EO.

FOR THIS OFFER CALL

DAVID 0400 095 483

Because trust is a must

www.rossdalehomes.com.au