

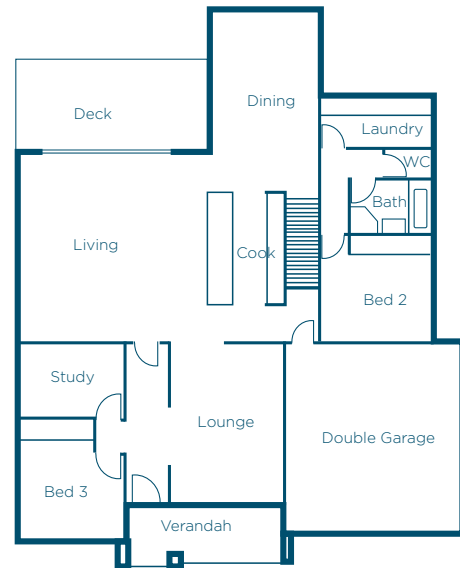


4 Gardenia Street, Seacliff Park House & Land Package From: \$760,000

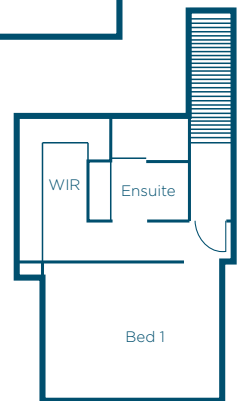
This package includes:

Land size 580m²

- ▶ Elevated land 580m² 16.25m wide with views North
- ▶ Based on our Rossdale Homes Waitpinga 2 Storey Home
- ▶ Sovereign Specifications with custom upgrades Included
- ▶ Big Oiled Hardwood Timber deck under main roof
- ▶ Upgraded Boutique Windows, WRC Stained Gables
- ▶ 3 good sized bedrooms and Study.
- ▶ Master views South, massive WIR and Ensuite 2.0m shower.
- ▶ Separate Home Theatre / Lounge 3.9m x 5.3m
- ▶ 2.7m ceilings to main living, lower brms, 2.4m to upper
- ▶ Corrosion Zone Protection and upgraded Windspeed
- ▶ NBN ready. Electric Oven & Black Ceramic Cooktop
- ▶ R3.0 Mid Floor Insulation plus R2.0 walls and R4.0 to ceilings
- ▶ Caesarstone Bench tops
- ▶ 100% Fixed Footings incl Spoil Removal from site
- ▶ Double Garage Auto Panel Lift, Upgraded Door and Remotes
- ▶ Quality Westinghouse appliances and Chromagen 280lt HWS
- ▶ New Wood Effects Plank Flooring and Carpet Bedrooms
- ▶ 25 Year structural warranty



**Choose your
own tiles &
colours**



Disclaimer: All care has been taken in the preparation of this material. No responsibility is taken for any errors or omissions. Details are subject to change without notification. Images for illustration purposes only. E&EO.

Call Dave Goddard 0450 502 571
d.goddard@rossdalehomes.com.au