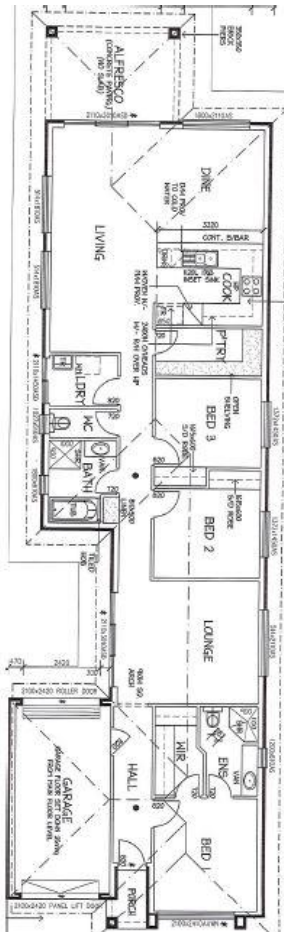


House & Land Package



ASCOT TERRACE

Address: 3 Condamine St. Hillcrest

This package includes:

- Upgraded front façade with partly rendered.
- Panel lift doors to garage with remote controllers
- WIR In bed 1, Sliding robes In Bed 2 & 3
- Linen & Pantry cupboards.
- Stainless steel Westinghouse appliances
- 2.7m high ceilings
- 25-degree roof pitch
- Land size 9.15 x 39.62 = 362m² approx
- Alternate concept plan available, with more Front façade options
- FIXED price contract, so no builder variations
- Rossdale Homes quality assurance
- Call today for more details

PACKAGE FROM: \$459,575

HOME: \$179,575 LAND: \$280,000

Disclaimer: All care has been taken in the preparation of this material. No responsibility is taken for any errors or omissions. Details are subject to change without notification. Images for illustration purposes only. E&EO.

FOR THIS OFFER CALL

SAGAR 0430 466 001

Because trust is a must

www.rosdalehomes.com.au