



## 13 SNEAD CRESCENT, FAIRVIEW PARK

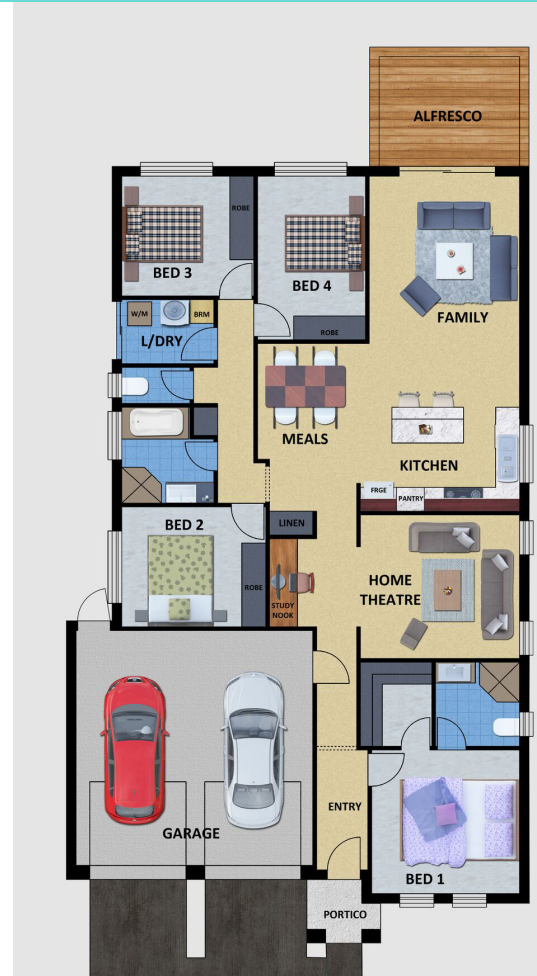
### House & Land Package From: \$559,000

This package includes:

**2 Large blocks available with potential city views in great location.** It is very hard to find blocks 480m<sup>2</sup> + with 14.36m frontages in this sought after area of Fairview Park. Blocks won't last long.  
**Call today to discuss land and build options**

- ▶ 4 bedroom home with double panel lift garage door, including remote doors & internal access into home
- ▶ Render to front façade & brick piers
- ▶ Alfresco to rear
- ▶ 2700mm high ceilings
- ▶ Colorbond roof
- ▶ Robes to bedrooms 2, 3 & 4
- ▶ Gloss kitchen
- ▶ Stainless steel kitchen appliances
- ▶ Mixer tapware throughout
- ▶ Ducted reverse cycle
- ▶ Floor coverings throughout
- ▶ Instantaneous gas HWS
- ▶ R4.0 ceiling insulation & R2.0 external wall insulation
- ▶ NBN package
- ▶ Storm water disposal
- ▶ Septic tank
- ▶ Footings allowance with all excess soil removed (subject to final engineering report)

Disclaimer: All care has been taken in the preparation of this material. No responsibility is taken for any errors or omissions. Details are subject to change without notification. Images for illustration purposes only. E&EO.



Call Michael Penney  
**0422 969 672**  
 mpenney.rps@rossdalehomes.com.au

Call Brooke Parker  
**0422 049 619**  
 bparker.rps@rossdalehomes.com.au