

# House & Land Package

Do you pay too much tax? Want to create a better lifestyle for your retirement? Act now!

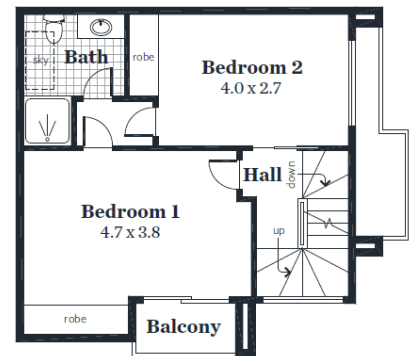
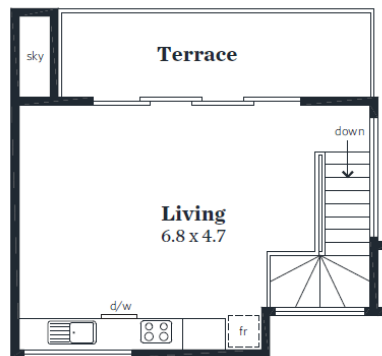
**Now with  
lifetime  
rental  
guarantee!**



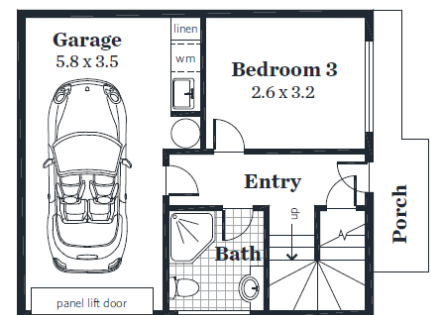
107 CHURCHILL ROAD,  
PROSPECT

No stress – Fully inclusive “Turn Key” package  
Ready to Rent out!

- **Rent Guaranteed for Life - \$450 per week**
- Modern Luxury Townhouse close to CBD.
- **DUE FOR COMPLETION NOVEMBER 2019!**
- Comprising 3 bedrooms and a single garage with panel door and remote control.
- Open plan cook/meals/living rooms on 3<sup>rd</sup> level with balcony.
- Spacious bedrooms with 2 bathrooms.
- Built in robes to bedrooms 1 and 2.
- Stone benchtops to cook.
- 6 Star energy rating; fully insulated & air conditioning systems.
- Quality floor coverings throughout.
- Light fittings and window-dressings throughout.
- Low maintenance landscaping and security gates.
- All fencing, paving and gates.
- Home has been carefully designed to achieve the maximum depreciation benefits and tenant appeal to maximise your investment.
- Fully turnkey, no more work for you to do, right down to the letterbox!



Area (Estimate only)	
Living	106.01 m <sup>2</sup>
Garage	20.41 m <sup>2</sup>
Terrace	10.54 m <sup>2</sup>
Porch	3.72 m <sup>2</sup>
Balcony	2.71 m <sup>2</sup>
Total	143.39 m <sup>2</sup>



Images for illustration purposes only.

FOR THIS OFFER CALL

**BROOKE THOMSON 0422 585 606**