

House & Land Package

Lot 69 Douglas Drive, The Summit, Mt Barker

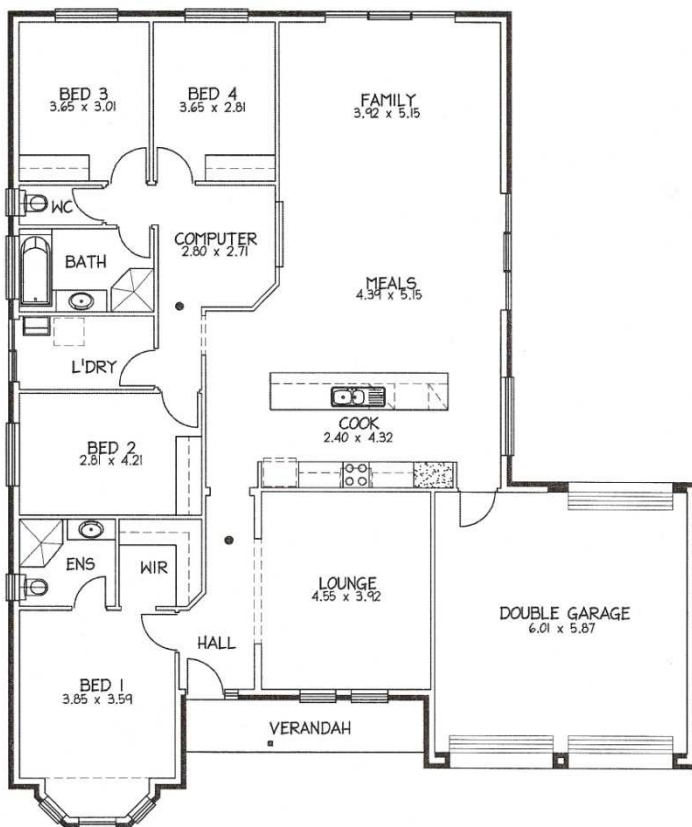


From **\$393,900**

(includes land price of \$186,000)

Package includes:

- **Verdun** design built to Rossdale Homes Sovereign specification
- Front elevation with tooled & rendered quoins
- 2700mm ceiling height
- North facing living areas open onto large rear yard
- Double Garage with secure access
- Medium bushfire zone building requirements
- Additional footings & site works allowance.
- Septic to CED tank & connection
- Solar HWS with electric booster plus 2 x panels to roof.
- 2500Lt Rainwater tank plumbed to house
- Built in robe's to bed 2, 3 & 4



Area (m ²)	
Living	184.81
Garage	40.34
Verandah	6.61
Total	231.76

For more information call

Matt 040 77 555 87



Ph 08 8433 2000 www.rossdalehomes.com.au

Because trust is a must.

Disclaimer: All Care has been taken to ensure accuracy of information. Facades shown may be at an extra cost. Term and conditions may apply. All prices are subject to change without notice and this H&L package may be withdrawn at any time.