

# House & Land Package

Lot 52 Belmont Crescent, The Summit, Mt Barker



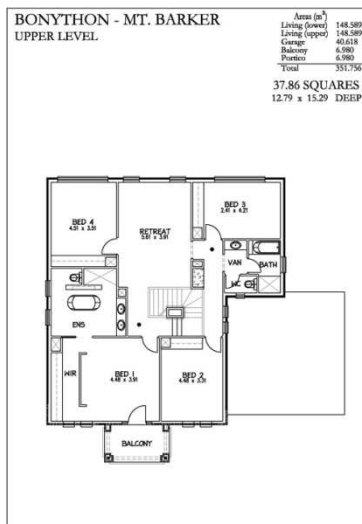
From **\$571,000**

(includes land price of \$182,000)

As at 31/01/10

Package includes:

- **Bonython** design built to Rossdale Homes Sovereign specification
- Front elevation rendered with stone work to portico
- 2700mm ceiling height upper & Lower levels
- North facing living areas
- Double Garage with secure access
- Medium bushfire zone building requirements
- Additional footings & site works allowance.
- Septic to CED tank & connection
- Solar HWS with electric booster plus 2 x panels to roof.
- 2500Lt Rainwater tank plumbed to house
- Built in robe's to bed 2, 3 & 4
- Paved driveway



BONYTHON - MT. BARKER  
LOWER LEVEL



For more information call

**Matt 040 77 555 87**



Ph 08 8433 2000 [www.rossdalehomes.com.au](http://www.rossdalehomes.com.au)

Because trust is a must.

Disclaimer: All Care has been taken to ensure accuracy of information. Facades shown may be at an extra cost. Term and conditions may apply. All prices are subject to change without notice and this H&L package may be withdrawn at any time.