



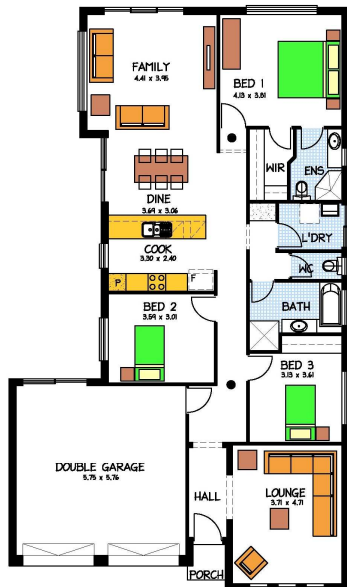
Home & Land Packages



KYTON - Aldinga Beach

Areas (m ²)	
Living	147.416
Garage	37.520
Portico	1.399
Total	186.335

20.05 SQUARES
11.51 x 20.39 DEEP



THE KYTON

LOT 753 BUSHTAIL AVE ALDINGA BEACH

This package includes:

- Kyton design built to Rossdale's Sovereign specification
- Double garage including 2 automatic roller doors and internal access
- R4.0 Ceiling insulation with R2.0 external wall insulation
- H class footings allowance with flexible connections
- Soil removal from all footings trenches
- Wind & Corrosion zone requirements
- Rainwater Tank supply and installation
- Solar gas boosted hot water system
- Front elevation to be rendered and painted with Quartz Rustic Bookleaf Stack Veneer Stone to brick pier
- WIR and Ensuite to Master bedroom with BIR to bedroom 2
- Overhead cupboards with retracta rangehood to kitchen
- First Phone Point
- 25 Year Structural Warranty

PACKAGE FROM: **\$352,300**

HOME: **\$169,300** LAND: **\$183,000**

Images for illustration purposes only.

FOR THIS OFFER CALL
BRAD: 0421 940 398

P: 08 8433 2000 www.rossdalehomes.com.au

 *Because trust is a must.*
**ROSSDALE
HOMES**