



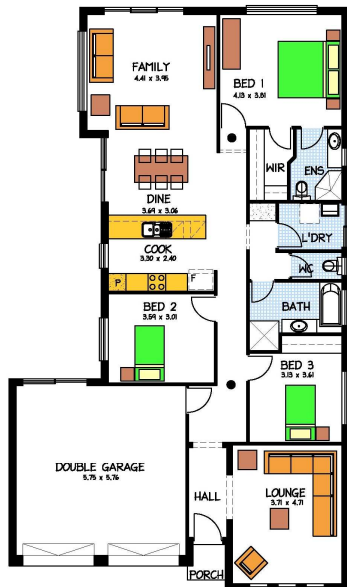
# Home & Land Packages



KYTON - Aldinga Beach

Areas (m <sup>2</sup> )	
Living	147.416
Garage	37.520
Porch	1.399
Total	186.335

20.05 SQUARES  
11.51 x 20.39 DEEP



## THE KYTON

### LOT 20 TATACHILLA ESTATE

#### This package includes:

- Kyton design built to Rossdale's Sovereign specification
- Double garage including internal access and 2 electric remote controlled roller doors
- R4.0 Ceiling insulation with R2.0 external wall insulation
- H Class footings allowance with flexible connections
- Soil removal from footings trenches
- Septic to CED as required in McLaren Vale
- Front elevation to be rendered and painted, with Quartz Rustic bookleaf stack venner stone to pier
- WIR and Ensuite to master bedroom with BIR to Bed 2
- Overhead cupboards with retracta rangehood to kitchen
- Instantaneous Hot Water System
- First Phone point
- LPG setup ready for gas bottles
- 25 Year Structural Warranty

PACKAGE FROM: **\$377,500**

HOME: **\$174,000** LAND: **\$203,500**

Images for illustration purposes only.

FOR THIS OFFER CALL  
**BRAD: 0421 940 398**

P: 08 8433 2000 [www.rossdalehomes.com.au](http://www.rossdalehomes.com.au)

 *Because trust is a must.*  
**ROSSDALE**  
HOMES