



Wistow

Very large 4 bedroom home

Inclusions:

- Bedroom 1 with walk in robe & ensuite
- 3 Living areas
- Separate Lounge
- Face stone façade with rendered quoins
- Alfresco
- Home Theatre Room
- Double Garage
- Select Specification
- Rainwater Tank Provision
- Footings Allowance



Guy Henderson 0411 176 020

The Westwood Advantage

Up To \$19,000 of extra features*

Fencing, paving, landscaping, security system & stormwater
*conditions apply

Conventional

18m Frontage

(Allotment valued at \$288,000)

House and Land Package

\$506,900



4 Bedrooms + Study



Double Carport



2 Bathrooms



Appliances



3 Living Areas



Front Landscaping



Government of South Australia
Department for Families
and Communities



CITY OF
**CHARLES
STURT**

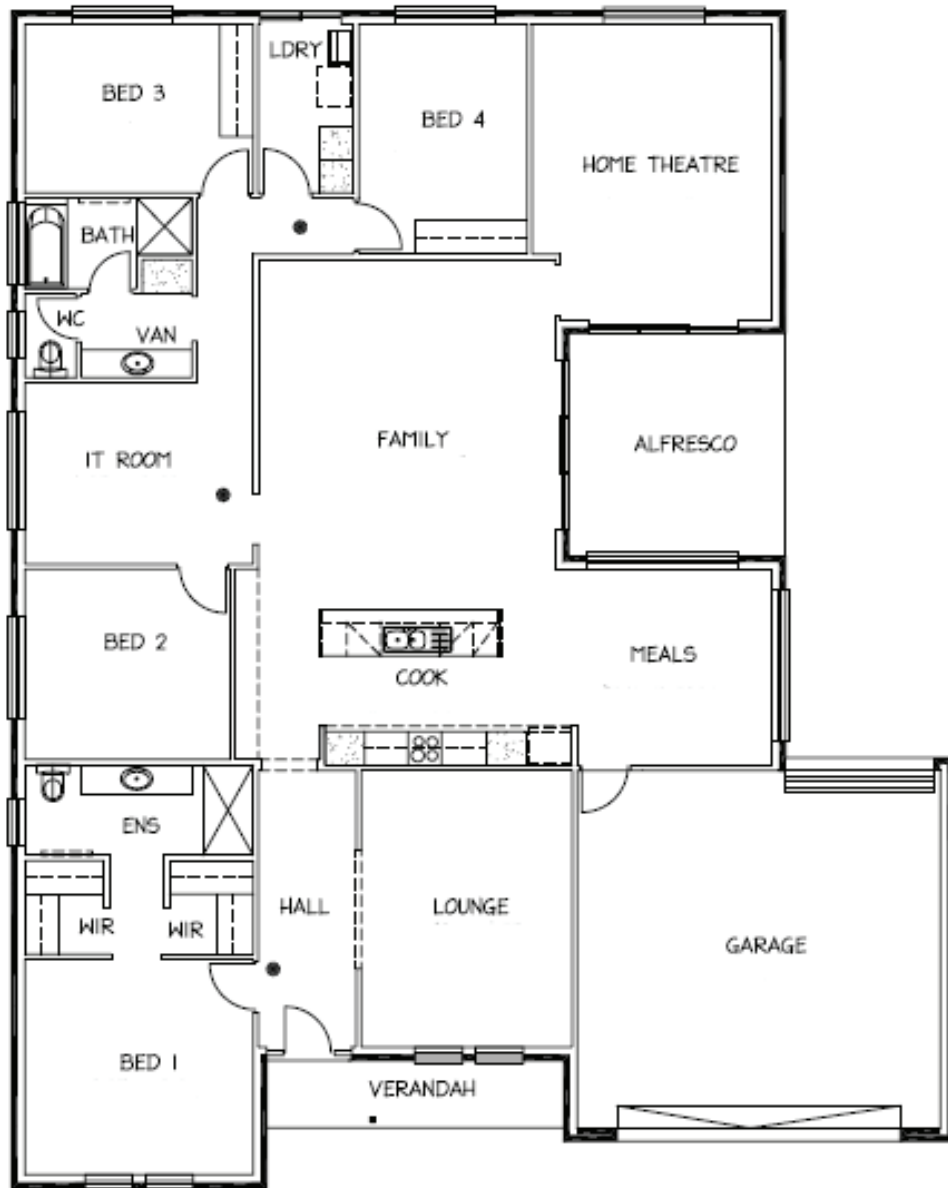


CITY OF
Port Adelaide Enfield



UrbanPacific
inspired thinking inspirational places

Westwood is a joint project by Urban Pacific Limited and Housing SA (Department for Families and Communities) in conjunction with the City of Port Adelaide Enfield and the City of Charles Sturt.



“Wistow by Rossdale”

Area (m ²)	
Living	233.88
Verandah	6.35
Garage	45.16
Alfresco	15.32
TOTAL	300.91

16.79m wide x 20.99m deep

ROSSDALE
HOMES

Because trust is a must.

The builders template has been prepared by UPL (SA) Pty. Ltd. RLA 163244 as agent for vendor. Whilst all information has been gathered from sources deemed to be reliable, neither we nor the vendor guarantee the accuracy of this information. Intending purchasers should make their own enquiries in relation to the development. Images are conceptual only 5463_0709.



Government of South Australia
Department for Families
and Communities



Urban Pacific
inspired thinking inspirational places

Westwood is a joint project by Urban Pacific Limited and Housing SA (Department for Families and Communities) in conjunction with the City of Port Adelaide Enfield and the City of Charles Sturt.