



# St Morris

Very large and most popular 4 bedroom home in the Rossdale range

## Inclusions:

- Bedroom 1 with walk in robe & ensuite
- Very large open plan living area
- Separate Lounge
- Bedroom 1 with Walk In Robe
- Double Garage
- Select Specification
- Rainwater Tank Provision
- Footings Allowance



**Guy Henderson 0411 176 020**

## The Westwood Advantage

Up To \$19,000 of extra features\*

Fencing, paving, landscaping, security system & stormwater  
\*conditions apply

## Super Villa

12.5m Frontage

(Allotment valued at \$230,000)

## House and Land Package

# \$387,100



4 Bedrooms



Double Carport



2 Bathrooms



Appliances



Large Family Room



Front Landscaping



Government of South Australia  
Department for Families  
and Communities



CITY OF  
**CHARLES  
STURT**



CITY OF  
**Port Adelaide Enfield**

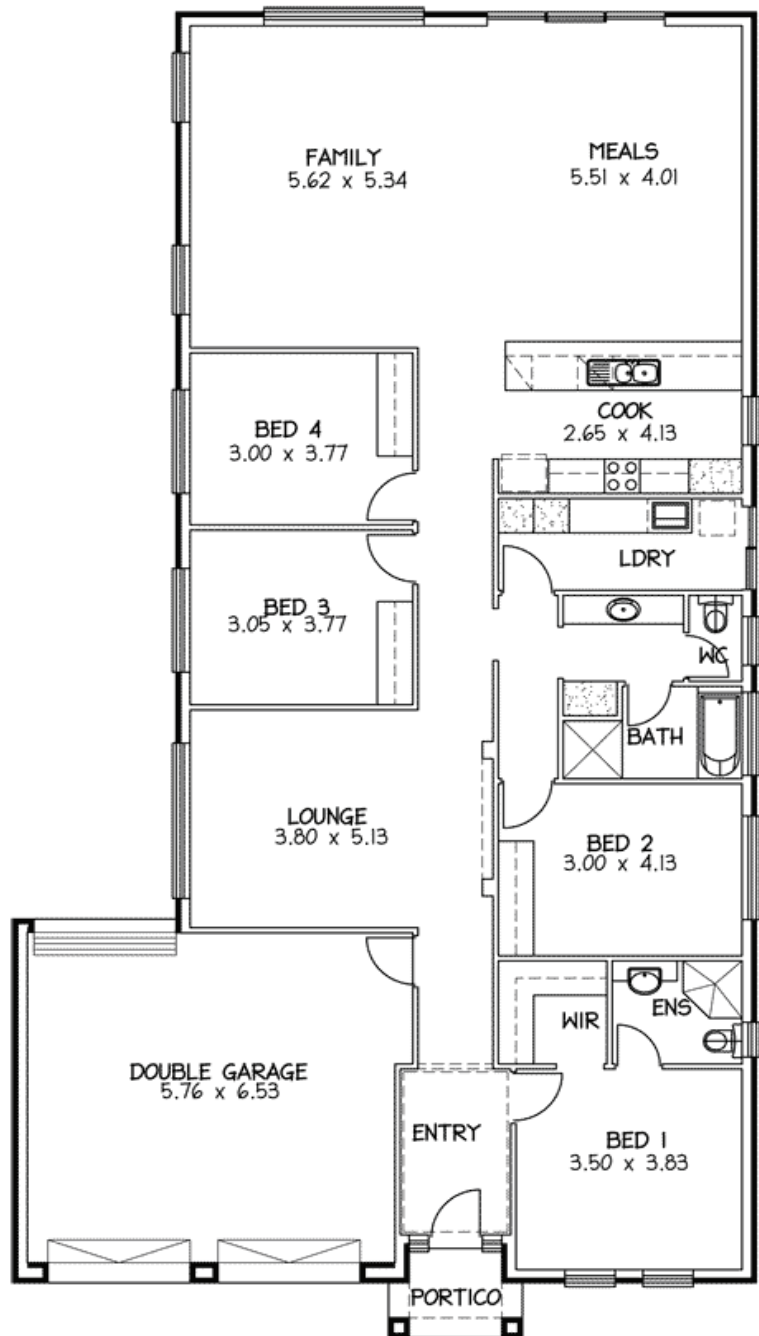


**UrbanPacific**  
inspired thinking inspirational places

Westwood is a joint project by Urban Pacific Limited and Housing SA (Department for Families and Communities) in conjunction with the City of Port Adelaide Enfield and the City of Charles Sturt.



Because trust is a must.  
**ROSSDALE**  
 HOMES



“St Morris by Rossdale”  
 (Courtyard size)

Area (m <sup>2</sup> )	
Living	193.59
Portico	3.12
Garage	41.02
<b>TOTAL</b>	<b>237.73</b>

12.59 wide x 23.14m deep

The builders template has been prepared by UPL (SA) Pty. Ltd. RLA 163244 as agent for vendor. Whilst all information has been gathered from sources deemed to be reliable, neither we nor the vendor guarantee the accuracy of this information. Intending purchasers should make their own enquiries in relation to the development. Images are conceptual only 5463\_0709.



Government of South Australia  
 Department for Families  
 and Communities



Urban Pacific  
 inspired thinking inspirational places

Westwood is a joint project by Urban Pacific Limited and Housing SA (Department for Families and Communities) in conjunction with the City of Port Adelaide Enfield and the City of Charles Sturt.