



Franklin

Inclusions:

- Home Theatre
- Formal Lounge
- Rendered Lounge and entry, including brick piers
- Separate retreat or 3rd living area
- Double Garage
- Articulated Façade
- Sovereign Specification
- Rainwater Tank Provision
- Footings Allowance



Guy Henderson 0411 176 020

The Westwood Advantage

Up To \$19,000 of extra features*

Fencing, paving, landscaping, security system & stormwater
*conditions apply

Conventional

18m Frontage

(Allotment valued at \$288,000)

House and Land Package

\$498,250



4 Bedrooms



Double Garage



2 Bathrooms



Appliances



3 Living Areas



Front Landscaping



Government of South Australia
Department for Families
and Communities



CITY OF
**CHARLES
STURT**

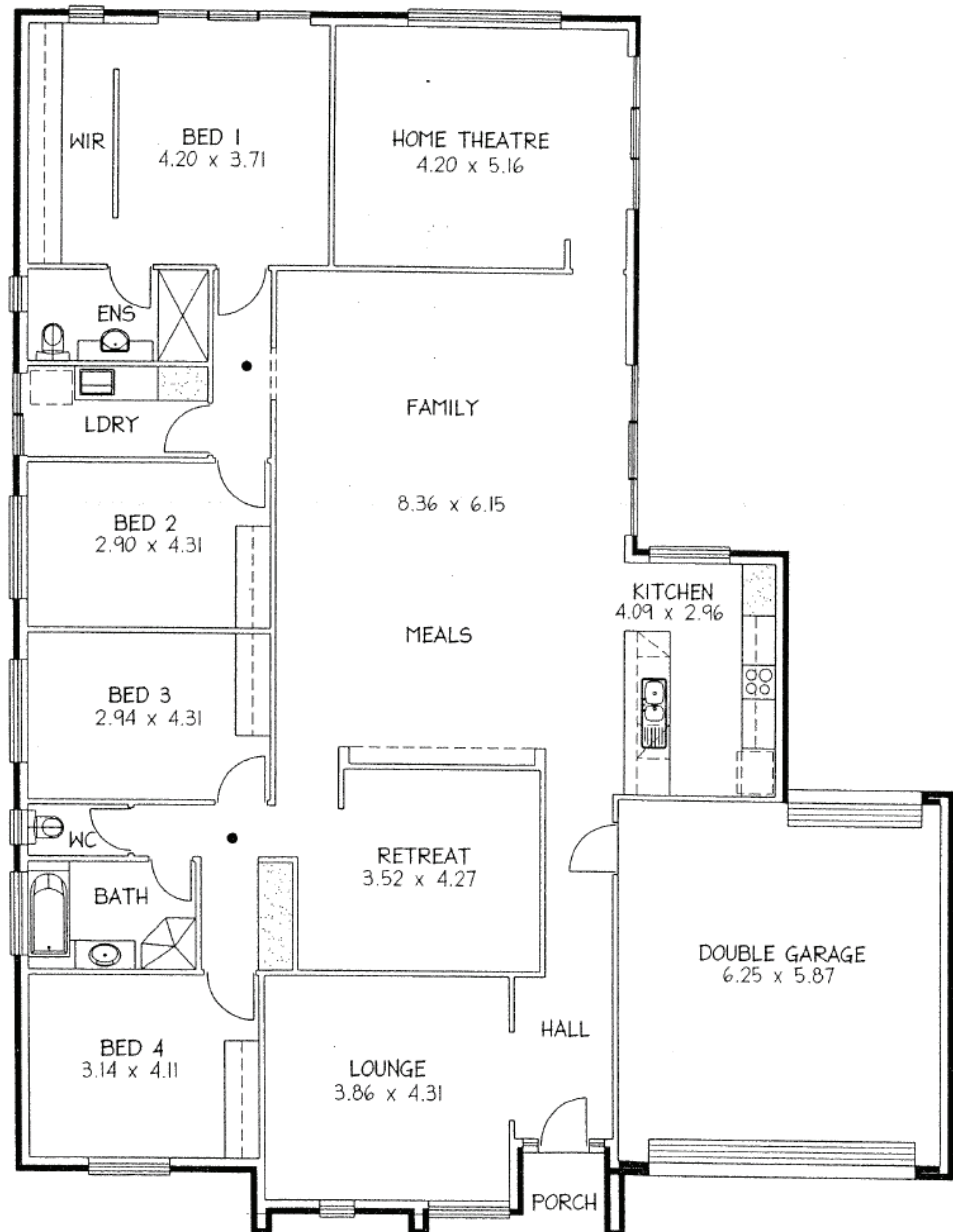


CITY OF
Port Adelaide Enfield



UrbanPacific
inspired thinking inspirational places

Westwood is a joint project by Urban Pacific Limited and Housing SA (Department for Families and Communities) in conjunction with the City of Port Adelaide Enfield and the City of Charles Sturt.



“Franklin by Rossale”

Area (m²)

Living	236.34
Garage	40.40
Porch	3.20
TOTAL	279.94

16.79m wide x 21.35m deep

The builders template has been prepared by UPL (SA) Pty. Ltd. RLA 163244 as agent for vendor. Whilst all information has been gathered from sources deemed to be reliable, neither we nor the vendor guarantee the accuracy of this information. Intending purchasers should make their own enquiries in relation to the development. Images are conceptual only 5463_0709.