



Bolero

Fantastic first home or investment

Inclusions:

- Large open plan living area
- Bedroom 1 with Walk In Robe & Ensuite
- Double Garage
- Classic front elevation—fully rendered facade with tiled roof
- Sovereign Specification
- Rainwater Tank Provision
- Footings Allowance



Guy Henderson 0411 176 020

The Westwood Advantage

Up To \$19,000 of extra features*

Fencing, paving, landscaping, security system & stormwater
*conditions apply

Super Villa

12.5m Frontage

(Allotment valued at \$230,000)

House and Land Package

\$370,800



3 Bedrooms



Double Garage



2 Bathrooms



Appliances



Family Room



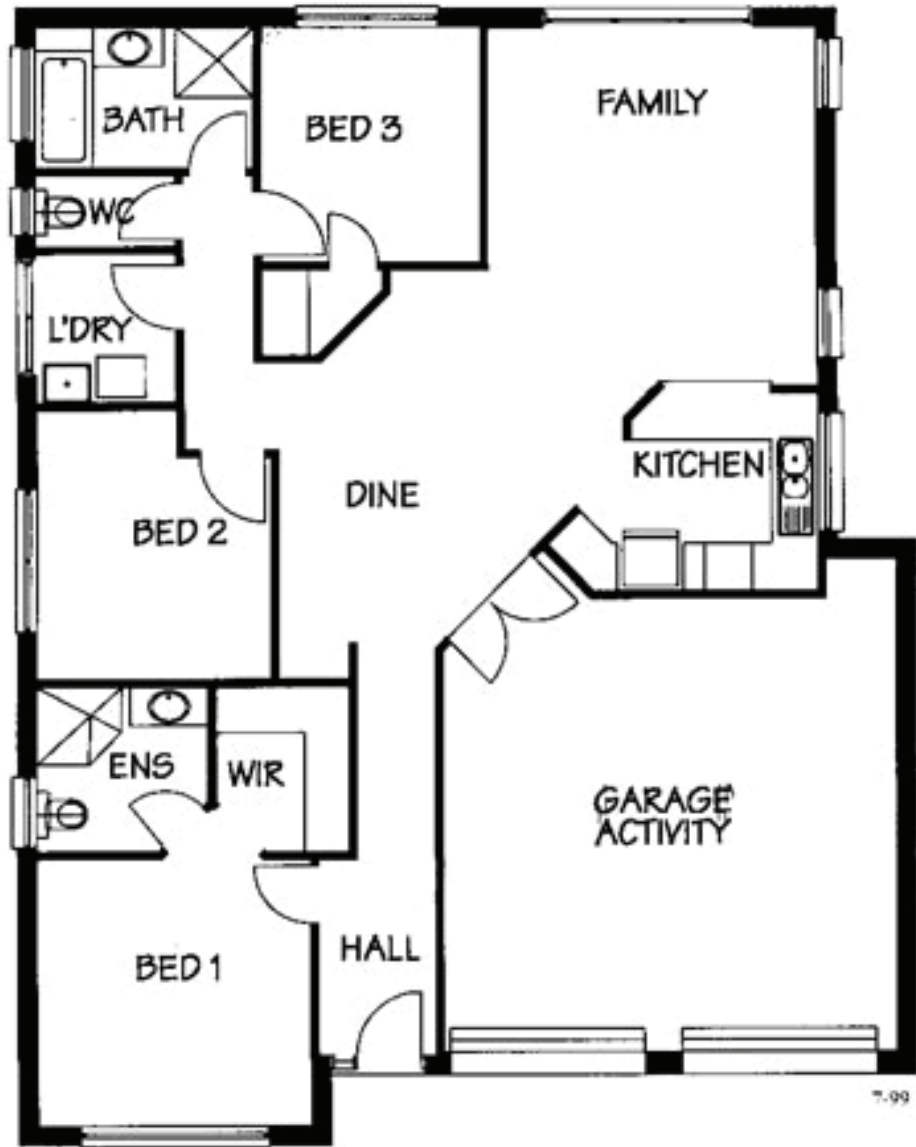
Front Landscaping



Government of South Australia
Department for Families
and Communities



Westwood is a joint project by Urban Pacific Limited and Housing SA (Department for Families and Communities) in conjunction with the City of Port Adelaide Enfield and the City of Charles Sturt.



“Bolero by Rossdale”

Area (m ²)	
Living	115.43
Garage	37.51
TOTAL	152.94

11.49m wide x 14.49m deep

ROSSDALE
HOMES

Because trust is a must.

The builders template has been prepared by UPL (SA) Pty. Ltd. RLA 163244 as agent for vendor. Whilst all information has been gathered from sources deemed to be reliable, neither we nor the vendor guarantee the accuracy of this information. Intending purchasers should make their own enquiries in relation to the development. Images are conceptual only 5463_0709.