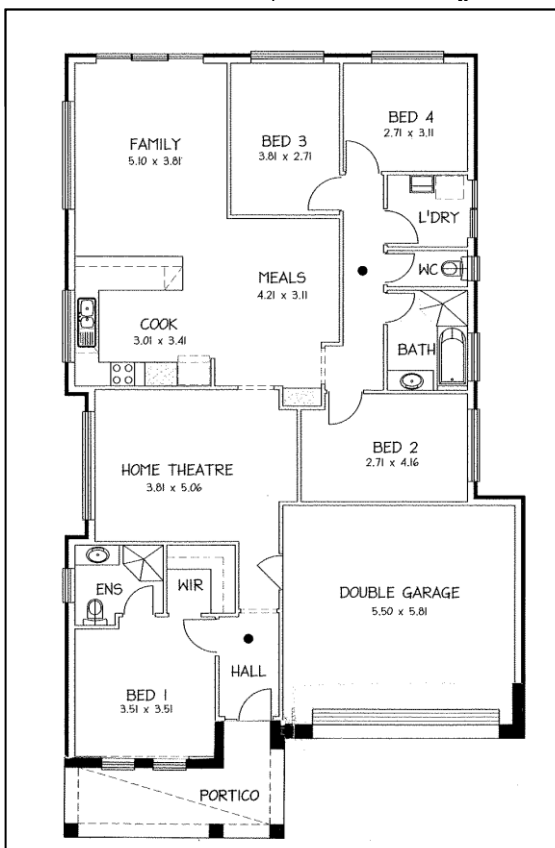


# HOUSE AND LAND PACKAGE



**The Envoy at  - \$300,000** (House and Land)  
\*\*\**(Please note front elevation shown will differ at Playford Alive)*



## Package includes:

- Reverse Cycle Ducted Air-conditioning
- Remote Control Double Garage Door
- Playford Alive Encumbrances
- Stainless Steel Westinghouse appliances
- Foundations (\$14,500)
- Land (\$127,750)
- See attached for detailed list of inclusions

*For more details contact-*

**Andrew McKinnon**

**0439 900 395 [andrew@rossdalehomes.com.au](mailto:andrew@rossdalehomes.com.au)**

**&**

**Daniel French**

**0411 275 210 [dfrench@rossdalehomes.com.au](mailto:dfrench@rossdalehomes.com.au)**

Disclaimer: All care has been taken to ensure accuracy of information. Terms and conditions may apply. All prices are subject to change without notice. E&EO



*Because trust is a must.*  
**ROSSDALE  
HOMES**