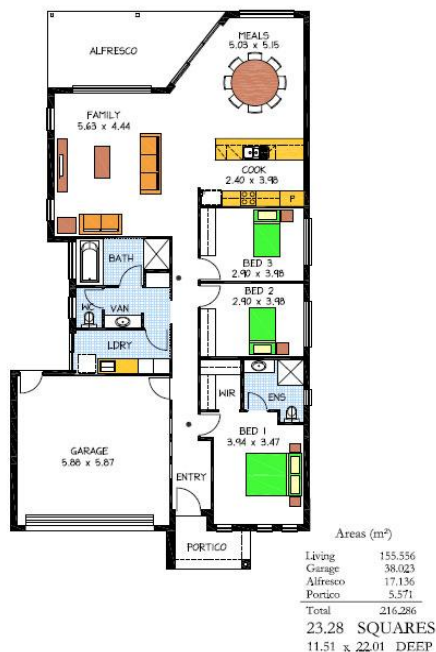


# HOUSE AND LAND PACKAGE



## The Encounter *at* Lakeside - \$325,000 (House and Land)

To Suite:  
12.5x30m Allotment



### Package includes:

- Displayed front elevation including render and stonework
- Automatic Panel-lift door
- Lakeside Encumbrances
- Stainless Steel Westinghouse appliances
- Foundations (\$15,250)
- Land (\$131,000)
- See attached for detailed list of inclusions

*For more details contact-*

**Andrew McKinnon**

0439 900 395 [andrew@rossdalehomes.com.au](mailto:andrew@rossdalehomes.com.au)

**&**

**Daniel French**

0411 275 210 [dfrench@rossdalehomes.com.au](mailto:dfrench@rossdalehomes.com.au)

Disclaimer: All care has been taken to ensure accuracy of information. Terms and conditions may apply. All prices are subject to change without notice. E&EO



*Because trust is a must.*

**ROSSDALE  
HOMES**