



# Home & Land Packages



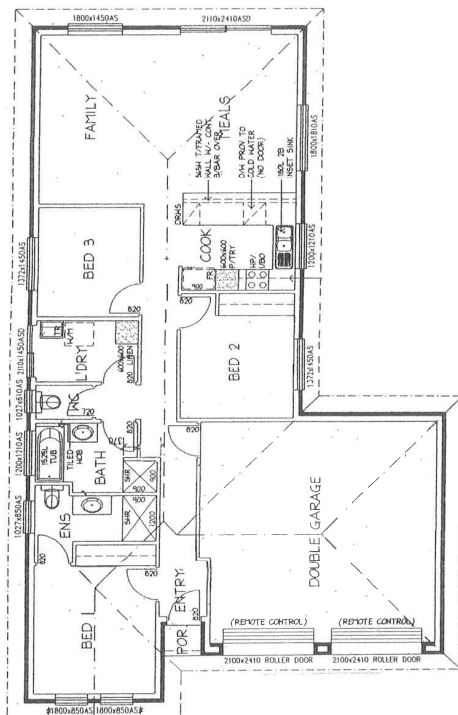
## LOT 7 TREVOR STREET, MURRAY BRIDGE

### This package includes:

- Rossdale Home with double garage including remote door
- 3 Bedrooms / 2 Bathrooms
- Colorbond Roof
- Footings, soil removal & stormwater allowance
- Built in robes to bedrooms 1 & 2
- Stainless Steel appliances & overhead cupboards to the kitchen
- Floor coverings
- Rain water tank
- Concrete paths & driveway
- Reverse cycle split system a/c

**PACKAGE FROM: \$267,000**

Images for illustration purposes only.  
Stamp duty payable on land only



FOR THIS OFFER CALL  
**MICHAEL PENNEY 0422 969 672**  
P: 08 8433 2000 [www.rossdalehomes.com.au](http://www.rossdalehomes.com.au)

 *Because trust is a must.*  
**ROSSDALE**  
HOMES