



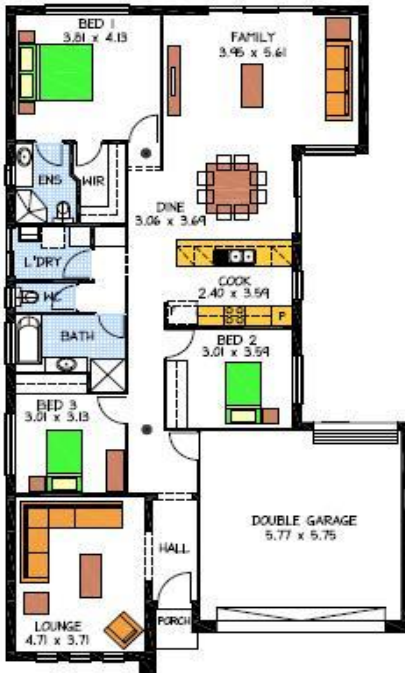
# Home & Land Packages



KYTON

Areas (m <sup>2</sup> )	
Living	152.662
Garage	37.520
Porch	1.399
Total	191.581

20.62 SQUARES  
11.51 x 20.19 DEEP



## LOT 2 HALLETT ROAD, LITTLEHAMPTON

This package includes:

- Rossdale home with double garage including remote doors
- Built in robes to bedrooms 2 and 3
- R4.0 ceiling and R2.0 external wall insulation
- Instantaneous gas HWS
- Stainless steel kitchen appliances
- Overhead cupboards
- Mixer tapware throughout
- Medium bushfire requirements
- Septic to CED
- Stormwater disposal
- Footings and soil removal

HOUSE AND LAND FROM: **\$405,000**

Images for illustration purposes only.  
Subject to final engineering

FOR THIS OFFER CALL  
NAME: MICHAEL PENNEY 0422 96 96 72  
P: 08 8433 2000 [www.rossdalehomes.com.au](http://www.rossdalehomes.com.au)

 *Because trust is a must.*  
**ROSSDALE**  
HOMES