



Home & Land Packages

THE WAKEFIELD

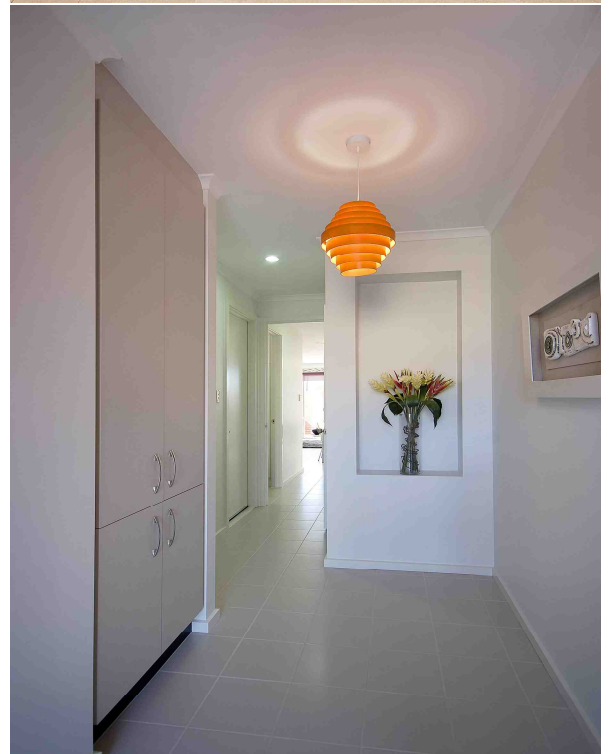
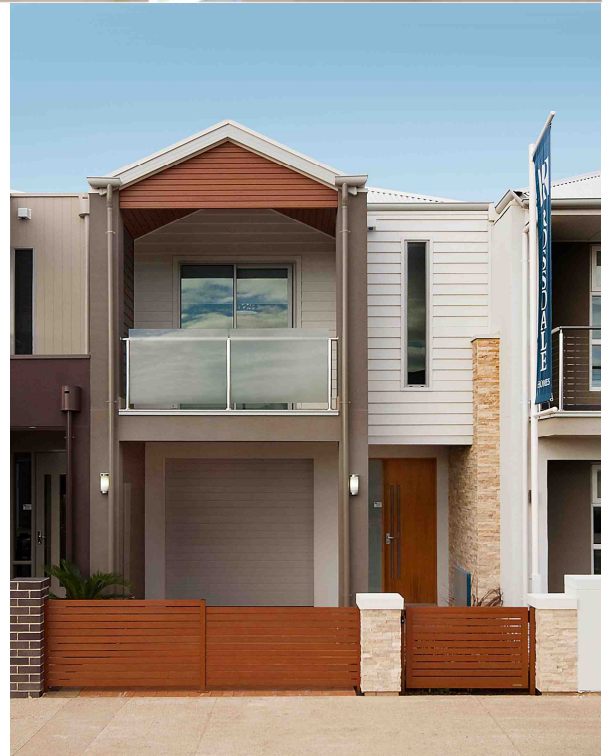
CITYSIDE DRIVE (LIGHTSVIEW)
NORTHGATE SA 5085

This package includes:

- Popular location in northeastern suburbs
- 5.5m wide x 27.5m deep block
- Wakefield design built to Rossdale's Sovereign Specification
- Spacious open plan Including 3 bedrooms and Formal lounge
- Rear Loading double garage with automatic roller doors
- Corner BIR & Ensuite to master bedroom with BIR to bed 2 & 3
- Separate Dine and Meals area
- First Phone point
- Instantaneous Hot Water System
- Lightsview standard including 6 green-star saving
- M class footings allowance including all soil removal
- Fixed Price Including engineers footing report before signing contract
- Approved Termi Mesh termite treatment with written warranty (no chemicals)
- H.I.A major builder award winner
- 25 Year Structural Warranty
- Your choice of internal and external paint colours
- Hot water system. Gas 5 star 135 litre storage unit
- Easy finance
- \$23,500 to the first home buyer!

PACKAGE FROM: \$427,000
HOME: \$290,000 LAND: \$137,000

Images for illustration purposes only.



FOR THIS OFFER CALL
CHEN:0433 482 258

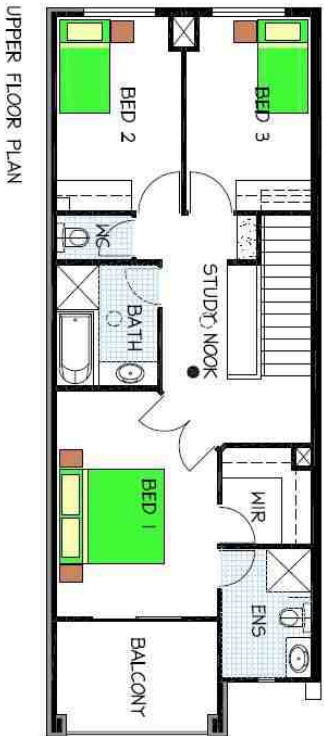
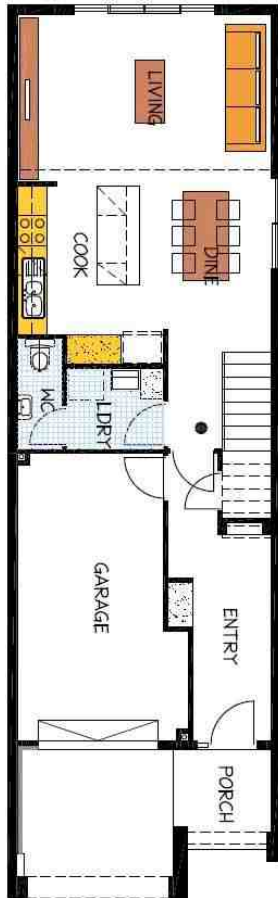
P: 08 8433 2000 www.rossdalehomes.com.au

 *Because trust is a must.*
**ROSSDALE
HOMES**



Home & Land Packages

HOUSE 3 - Lightview



Areas (m ²)	
Lower living	62.75
Upper living	70.66
Garage	20.81
Porch	4.74
Balcony	8.20

Total 167.16

17.99 SQUARES

5.50 x 18.03 DEEP

FOR THIS OFFER CALL
CHEN: 0449 254 211

P: 08 8433 2000 www.rossdalehomes.com.au

 *Because trust is a must.*
**ROSSDALE
HOMES**