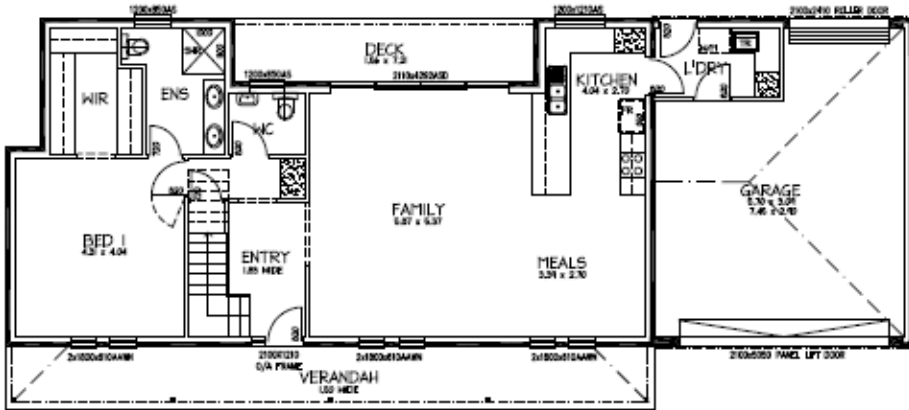
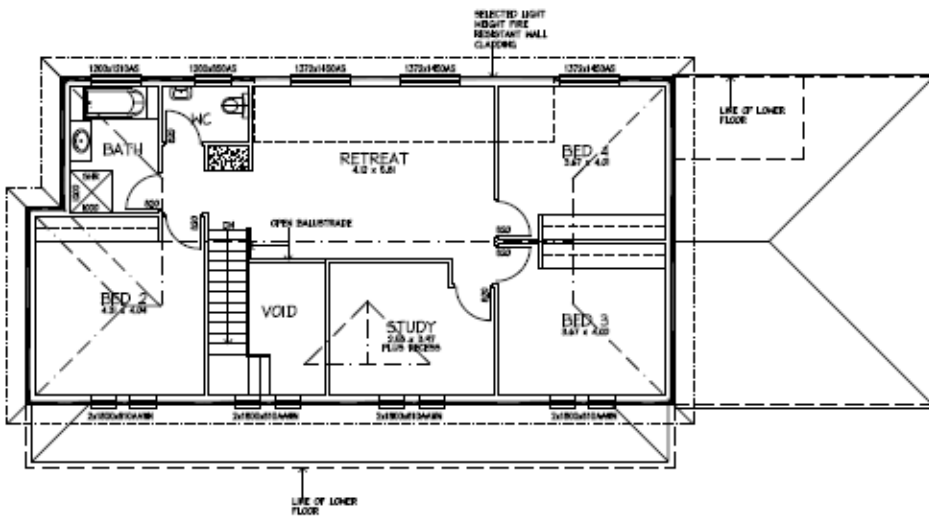




Home & Land Packages



LOWER FLOOR PLAN



UPPER FLOOR PLAN

THE GROVE

LOT 13 JENKINSON DRIVE
MOUNT BARKER

This package includes:

- 1260m2 of land in the lovely Grove estate Mount Barker
- This floorplan has been designed for this block and offers 4 large bedrooms and study with open living areas
- WIR & Ensuite to master bedroom with BIR to beds 2, 3 & 4
- All services have been allowed for including bushfire and septic to CED
- Instantaneous hot water system
- Reverse Cycle Air Conditioning
- Dishwasher
- Double garage with 5m auto panel lift door with internal access to home
- Floating floors and carpet inside with tiling to front verandah
- Driveway and perimeter paths are also included
- Insulation to external & internal walls along with ceiling & mid-floor insulation
- 25 Year Structural Warranty
- Absolute Fixed Price Contract
- Call today for more information or to tailor package to your requirements

PACKAGE FROM: **\$565,000**

Disclaimer: All care has been taken in the preparation of this material. No responsibility is taken for any errors or omissions. Details are subject to change without notification. Images for illustration purposes only. E&EO.



first national
REAL ESTATE

Pope Nitschke

FOR THIS OFFER CALL
BRAD: 0421 940 398

P: 08 8433 2000 www.rossdalehomes.com.au

R *Because trust is a must.*
ROSSDALE HOMES