



Home & Land Packages



THE ENVOY

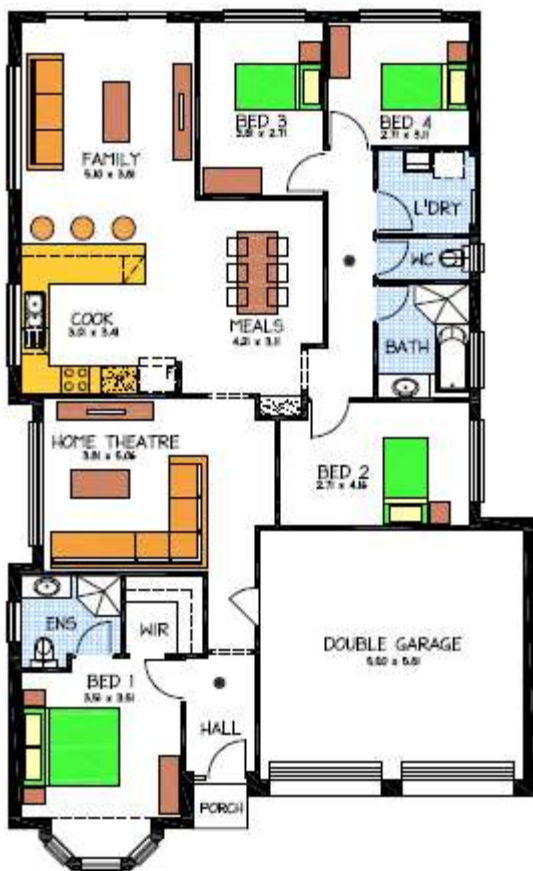
LOT 135 ASTON HILLS
MOUNT BARKER

This package includes:

- 480m2 of land in the new 'Aston Hills' Estate in Mount Barker
- Rosedale Homes 4 bedroom Envoy design built to Sovereign Specifications
- Medium bushfire requirements including sarking under the roof and security doors throughout
- Large footings and site-works allowance
- All service connections including septic to CED and gas bottle ready
- Front elevation with Queen Anne Bay Window including render and paint with mouldings as per illustration
- Automatic roller doors and internal access from garage
- Ceiling, external and internal wall insulation throughout
- Instantaneous hot water system
- 25 Year Structural Warranty
- Absolute Fixed Price Contract with no hidden costs
- Package can be tailored to suit your needs

PACKAGE FROM: **\$363,000**

Disclaimer: All care has been taken in the preparation of this material. No responsibility is taken for any errors or omissions. Details are subject to change without notification. Images for illustration purposes only. E&EO.



FOR THIS OFFER CALL
BRAD: 0421 940 398

P: 08 8433 2000 www.rossdalehomes.com.au

ROSSDALE
HOMES

Because trust is a must.