

# House & Land Package



## THE KYTON

Lot 234 Matthews Street, Pipers Crest  
Strathalbyn

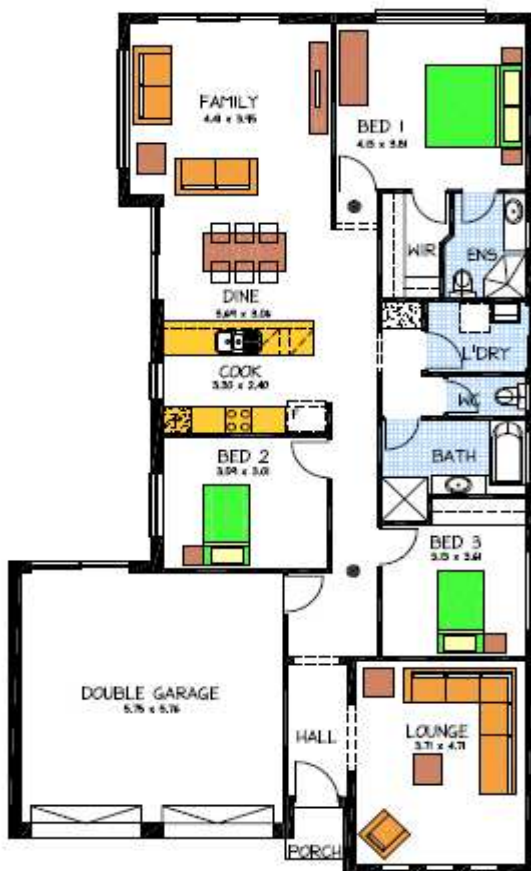
Allotment 525m<sup>2</sup>, Home 186m<sup>2</sup>

Complete package realistic price

- Ducted reverse cycle heating/cooling
- Wir and Ens to bed one
- Double Garage with roller doors
- Overhead cupboards to kitchen
- Paths and driveway
- Floor coverings
- R2.0 wall insulation
- R4.0 ceiling insulation
- Stainless steel kitchen appliances
- Extra footing allowance
- Rendered front façade

PACKAGE FROM: \$322,950

HOME: \$198,000 LAND: \$124,950



Disclaimer: All care has been taken in the preparation of this material. No responsibility is taken for any errors or omissions. Details are subject to change without notification. Images for illustration purposes only. E&EO.

FOR THIS OFFER CALL

LEIGHTON 0408 002 336

*Because trust is a must*

[www.rossdalehomes.com.au](http://www.rossdalehomes.com.au)