

## House & Land Package



### 5A VIZARD RD, TEA TREE GULLY

**Rare 715m2 Allotment**  
(12.7 x 56.3m)

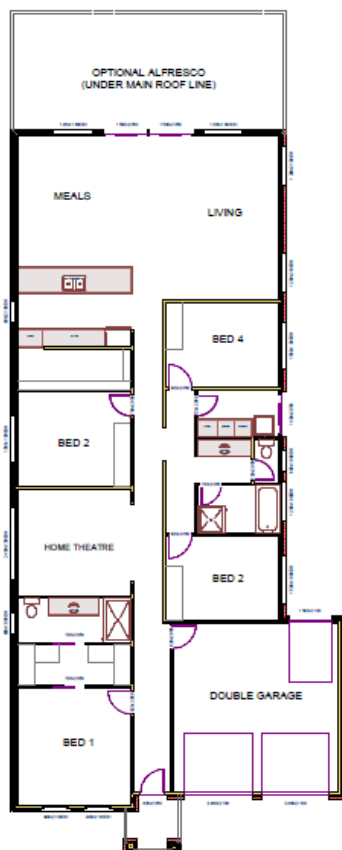
Exclusive to Rossdale Homes

**Premier land division in Tea Tree Gully.**

4 Bedroom home with two bathrooms (ensuite to master), home theatre, large kitchen plus walk In pantry and an inviting open plan meals/living area. 2700mm high ceilings throughout. Feature façade including portico & combination of brick & render.  
(Turn key options available)

**H&L BASED FROM -  
\$549,000**

**715m2**



Disclaimer: All care has been taken in the preparation of this material. No responsibility is taken for any errors or omissions. Details are subject to change without notification. Images for illustration purposes only. E&EO.

FOR THIS OFFER CALL

**DANIEL: 0411 275 210**

*Because trust is a must*

[www.rossdalehomes.com.au](http://www.rossdalehomes.com.au)