

# House & Land Package

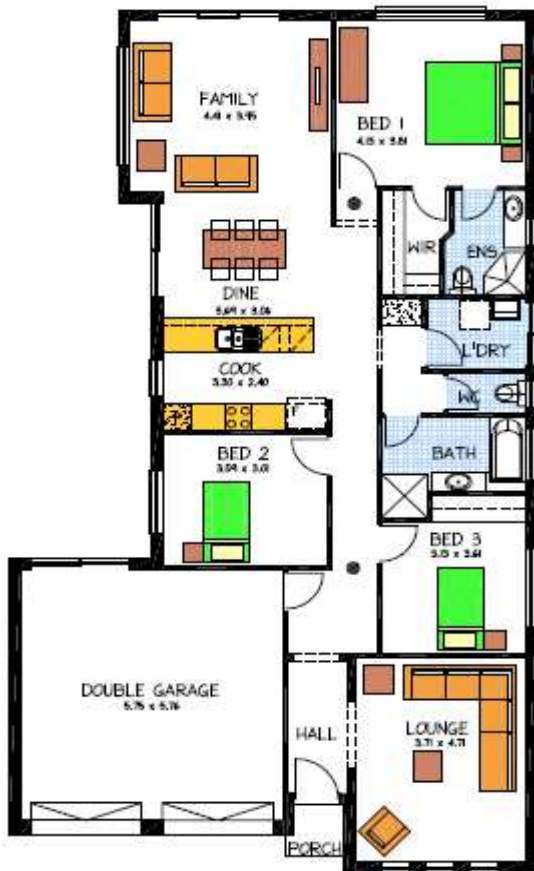


## THE KYTON

1725 Union Station Drive Seaford  
Meadows (375m<sup>2</sup> block)

Complete package realistic price

- Ducted reverse cycle heating/cooling
- Wir and Ens to bed one
- Double Garage with roller doors
- Overhead cupboards to kitchen
- Paths and driveway
- Floor coverings
- R2.0 wall insulation
- R4.0 ceiling insulation
- Stainless steel kitchen appliances
- Extra footing allowance
- Rendered front façade



PACKAGE FROM: \$390,093  
HOME: \$196,093 LAND: \$194,000

Disclaimer: All care has been taken in the preparation of this material. No responsibility is taken for any errors or omissions. Details are subject to change without notification. Images for illustration purposes only. E&EO.

FOR THIS OFFER CALL

LEIGHTON: 0408002336

*Because trust is a must*

[www.rossdalehomes.com.au](http://www.rossdalehomes.com.au)