

# House & Land Package



## THE ENVOY

Lot 2357 Triton St Seaford Meadows

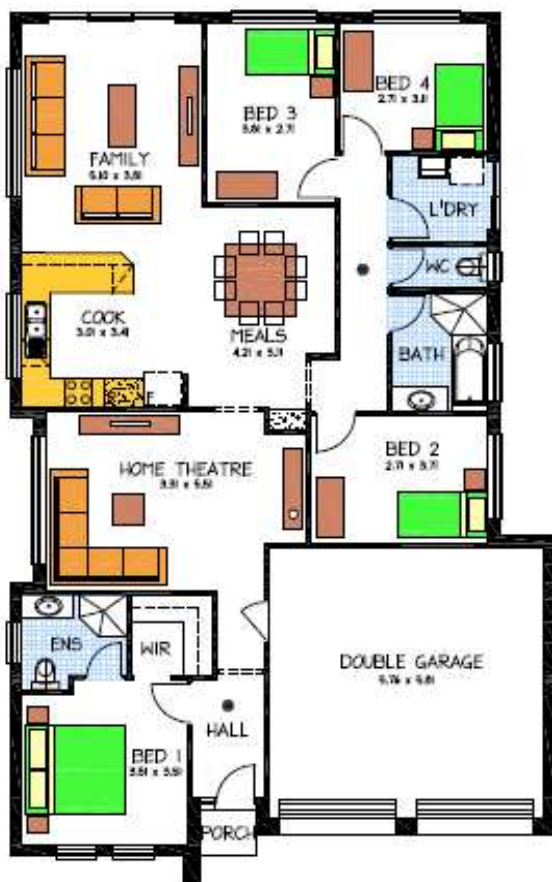
This package includes:

- Rossdale Homes Envoy design built to Select Specifications
- Double garage with automatic roller doors & internal access into home
- Front elevation is rendered and painted allowing 2 colors
- Master bedroom with Ensuite and walk in robe
- Quality Westinghouse appliances with retracta range-hood set in overhead cupboards
- Ceiling, External walls and internal walls are all insulated
- All services are included along with NBN wiring for fast internet
- Healthy footings allowance with all excess soil removed
- 25 Year Structural Warranty
- 100% Absolute Fixed Price Contract with no hidden costs

More options available for this package, call now for more info

**PACKAGE FROM: \$369,000**

Disclaimer: All care has been taken in the preparation of this material. No responsibility is taken for any errors or omissions. Details are subject to change without notification. Images for illustration purposes only. E&EO.



FOR THIS OFFER CALL

**BRAD: 0421 940 398**

*Because trust is a must*

[www.rossdalehomes.com.au](http://www.rossdalehomes.com.au)