

House & Land Package

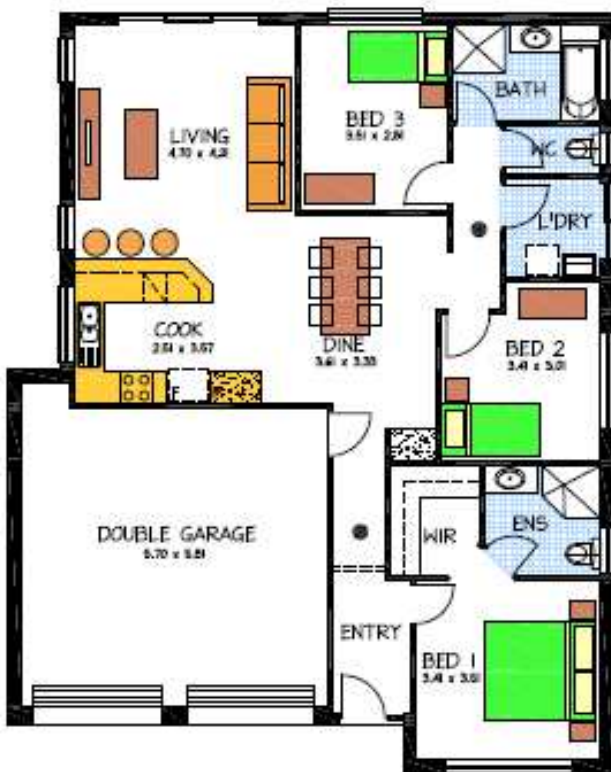


THE BOLERO

Allotment 23, 24 or 27 Rosewood Ave,
Elizabeth North (Rosewood Grove)

This package includes:

- 3 Bedrooms all with robes
- Ensuite to Master bedroom
- Spacious meals & family area
- Chef friendly Kitchen with ample cupboards
- Stainless Steel Appliances
- Overhead cupboards
- Excellent fixtures & fittings throughout
- Colorbond Roof
- Double carport with 2 roller doors
- Rendered front façade
- Insulation to walls & ceilings
- Generous Footings allowance
- Ideal for the Entertainer or just kick back and enjoy life!!



Disclaimer: All care has been taken in the preparation of this material. No responsibility is taken for any errors or omissions. Details are subject to change without notification. Images for illustration purposes only. E&EO.

PACKAGE FROM: **\$242,222**
HOME: **\$145,722** LAND: **\$96,500**

FOR THIS OFFER CALL
JAMES 0420 677 339

Because trust is a must
www.rossdalehomes.com.au