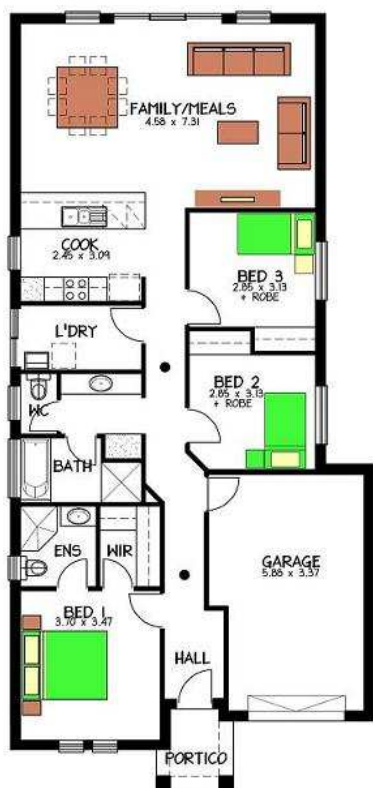


House & Land Package



MARDEN

21 TENYA ROAD INGLE FARM



- The 3 bedroom Marden built to Rosssdale Homes Sovereign specification
- Great Location only minutes from the Ingle Farm Shopping Centre.
- Front Render Elevation As Shown
- 2.4m Ceilings, Carpet and Tiling included
- Remote control automatic panel door
- Built in robes to all bed rooms
- Overhead cupboards and retractor rangehood to kitchen
- Generous Footings And Earthworks Allowance
- Rainwater, stormwater and paving included
- Dishwasher, oven , ducted airconditioning
- Absolute Fixed Price Contract
- 338m+ allotment
- 25 year structural warranty

HOUSE AND LAND PACKAGE FROM:

\$ 380,000

Images for illustration purposes only.