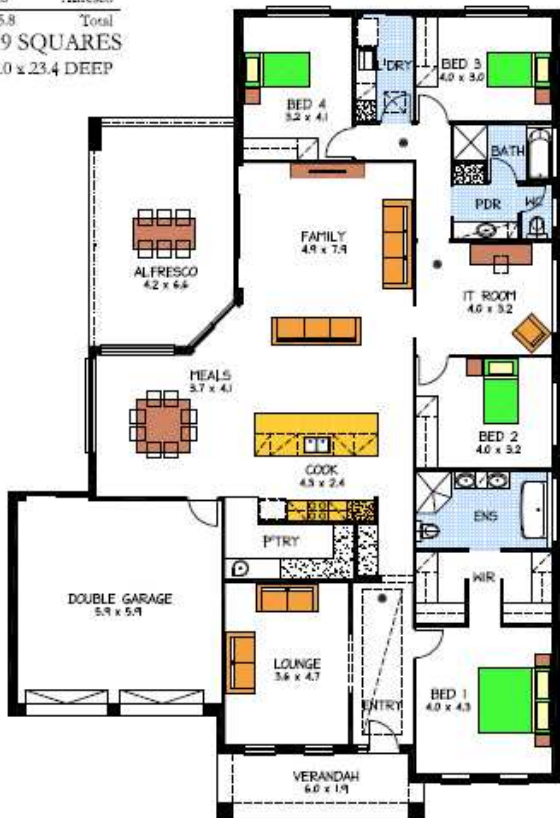


House & Land Package



Areas (m ²)	
229.1	Living
38.8	Garage
11.1	Verandah
26.8	Alfresco
305.8	Total
32.9 SQUARES	
16.0 x 23.4 DEEP	



THE ROCKLEIGH ON DISPLAY AT ASTON HILLS 128 Lucie Close, Aston Hills, Mt Barker

This package includes:

- Displayed Façade
- Floor Coverings
- Medium Bushfire
- 600mm footings allowance
- Developer requirements
- Concrete Paving to perimeter and driveway
- Stormwater connection
- Alfresco
- Walk in Pantry

PACKAGE FROM: \$489,600
HOME: \$297,600 LAND: \$192,000

Disclaimer: All care has been taken in the preparation of this material. No responsibility is taken for any errors or omissions. Details are subject to change without notification. Images for illustration purposes only. E&EO.

FOR THIS OFFER CALL
TIFFANY 0422 072 598

Because trust is a must
www.rosdalehomes.com.au