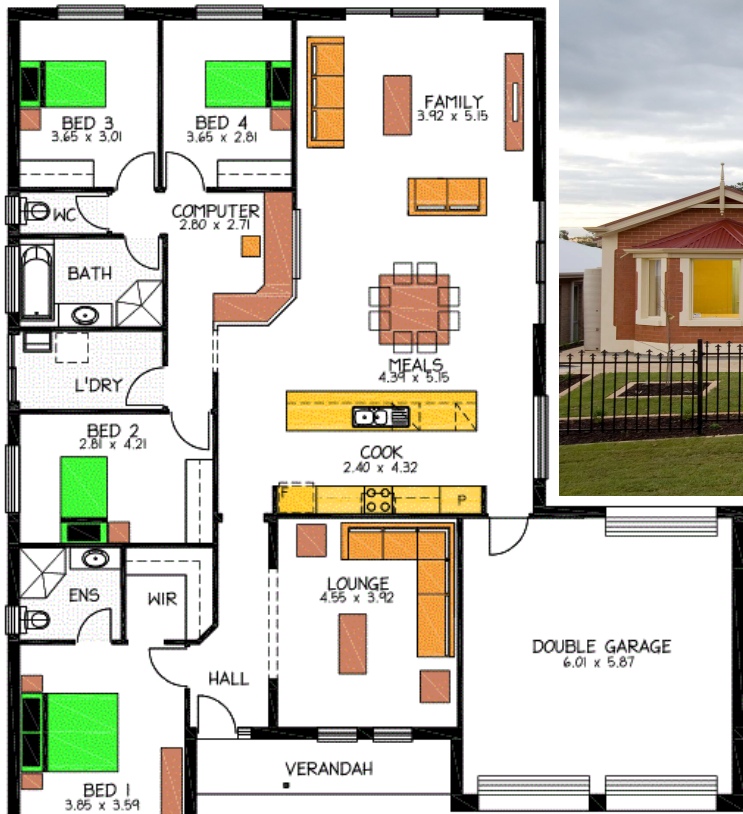


House & Land Package



**16 Gorman Street, MODBURY
VERDUN \$664,639**

FRONT: 21 DEPTH: 37
LAND: 777 sqm HOUSE: 231 sqm

This package includes: Five min walk to Teat Tree Plaza Shopping Centre, 6min walk to Tea Tree Plaza Interchange, perfectly located to shopping precinct, Tafe college, and Modbury High School.

- Caesar Stone Benchtops
- 2700mm Ceilings
- Robes to bed 2,3 & 4
- Master with WIR & Ensuite
- 2400mm height Rolla doors
- Overhead Cupboards & Bulkheads
- Soft close hinges to all cupboards
- Soft close draws to all kitchen draws

- All aluminium windows with fly screens and locks.
- Colourbond Roof, Gutter, Fascias and downpipes
- R2 Insulation in Ext Walls
- R4 Insulation in Ceiling
- Automatic Rolla Doors
- Rainwater tank
- Generous footings allowance with all excess spoil removed from site
- Fixed Price CONTRACT no VARIATIONS to surprise.
- Any unforeseen extra costs at ROSSDALE'S cost GUARENTEED.

Disclaimer: All care has been taken in the preparation of this material. No responsibility is taken for any errors or omissions. Details are subject to change without notification. Images for illustration purposes only. E&EO.

PACKAGE FROM: **\$664,639**

HOME: **\$254,639** LAND: **\$410,000**

FOR THIS OFFER CALL

GUY 0411 176 020

Because trust is a must

www.rossdalehomes.com.au