

House & Land Package



THE KYTON

No 29 Wigley Drive McLaren Vale

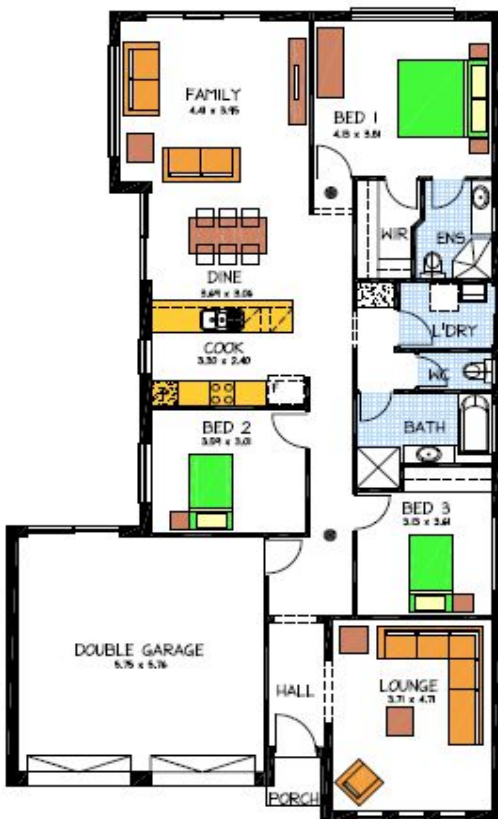
This package includes:

- 426m² of land in the lovely township of McLaren Vale
- Rossdale Homes Kyton design built to Select Specifications
- 2.7m ceilings throughout
- Double garage with auto roller doors and internal access into home
- Formal Lounge along with 3 good sized bedrooms, Master with Ensuite and WIR
- Quality Westinghouse appliances including retracta rangehood set in overhead cupboards and instantaneous hot water system
- Fully insulated
- Front elevation rendered and painted excluding brick pier
- All services are allowed for including Septic to CED, LPG bottle ready and NBN wiring ready for connection
- Healthy footings allowance with all excess soil removed from site
- 100% Absolute Fixed Price Contract with no hidden costs
- 25 Year Structural Warranty for peace of mind

More options available for this package, call today to find out more.

PACKAGE FROM: \$429,000

Disclaimer: All care has been taken in the preparation of this material. No responsibility is taken for any errors or omissions. Details are subject to change without notification. Images for illustration purposes only. E&EO.



FOR THIS OFFER CALL

BRAD: 0421 940 398

Because trust is a must

www.rossdalehomes.com.au