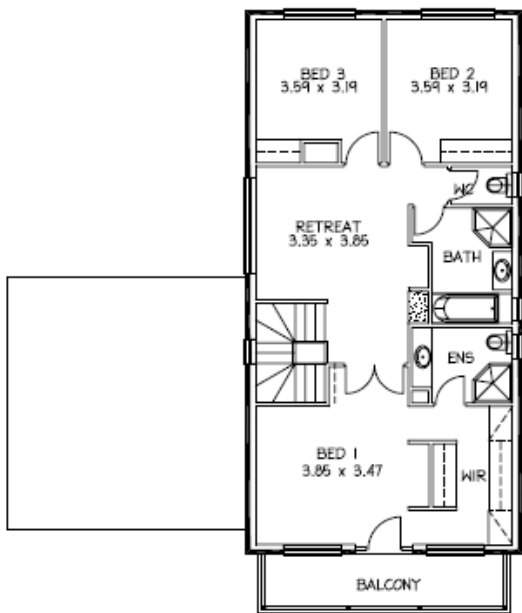


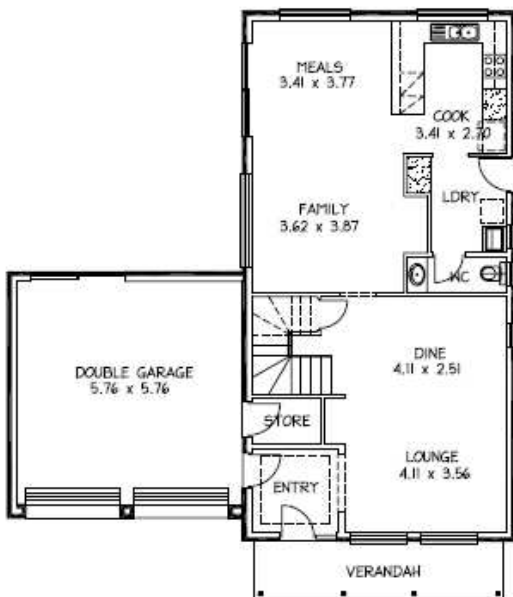
House & Land Package



THE GILBERT TCE 75 Venables St Macclesfield

This package includes:

- Rosssdale Homes Gilbert Tce design built to Sovereign specifications
- 1194m² of land in the lovely township of Macclesfield
- Double Garage with automatic roller doors and internal access into home
- Open plan design with 3 well sized bedrooms and dual living areas
- Master bedroom with Walk in Robe and Ensuite
- Built in robes to bedrooms two & three
- Bushfire requirements have been allowed for
- All service connections are taken care of including septic to CED
- Quality Westinghouse appliances including retracta range-hood set in overhead cupboards and electric ceramic hotplates
- Solar electric hot water system
- Healthy footings allowance including all soil removal from site
- 25 Year Structural Warranty
- 100% Absolute Fixed Price Contract with no hidden costs
- More options available for this package, call today to find out more



Disclaimer: All care has been taken in the preparation of this material. No responsibility is taken for any errors or omissions. Details are subject to change without notification. Images for illustration purposes only. E&EO.

PACKAGE FROM: \$469,500

FOR THIS OFFER CALL

BRAD: 0421 940 398

Because trust is a must
www.rossdalehomes.com.au