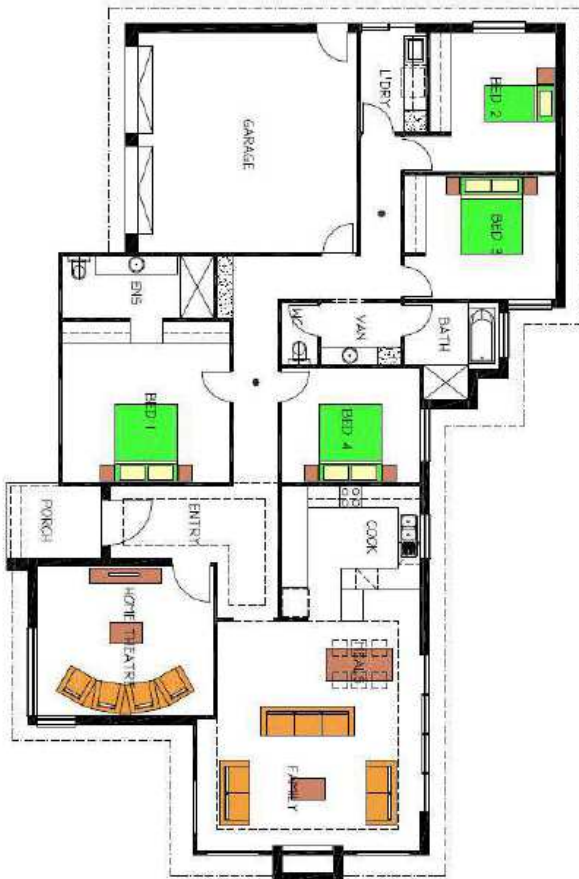


House & Land Package



THE FLAXLEY 8 Pemberton Court Macclesfield

This package includes:

- Rossdale Homes Flaxley design built to Sovereign specifications
- 970m2 of land in the lovely township of Macclesfield
- Double garage under main roof with automatic roller doors and internal access into home
- Open plan design with 4 well sized bedrooms and Home Theatre
- Master bedroom with built in robes and large Ensuite
- Built in robes to bedrooms two & three
- Bushfire requirements have been allowed for
- All service connections are taken care of including septic to CED
- Quality Westinghouse appliances including retracta range-hood set in overhead cupboards and electric ceramic hotplates
- Solar electric hot water system
- Healthy footings allowance including all soil removal from site
- 25 Year Structural Warranty
- 100% Absolute Fixed Price Contract with no hidden costs
- More options available for this package, call today to find out more

PACKAGE FROM: \$472,500

Disclaimer: All care has been taken in the preparation of this material. No responsibility is taken for any errors or omissions. Details are subject to change without notification. Images for illustration purposes only. E&EO.

FOR THIS OFFER CALL

BRAD: 0421 940 398

Because trust is a must

www.rossdalehomes.com.au