

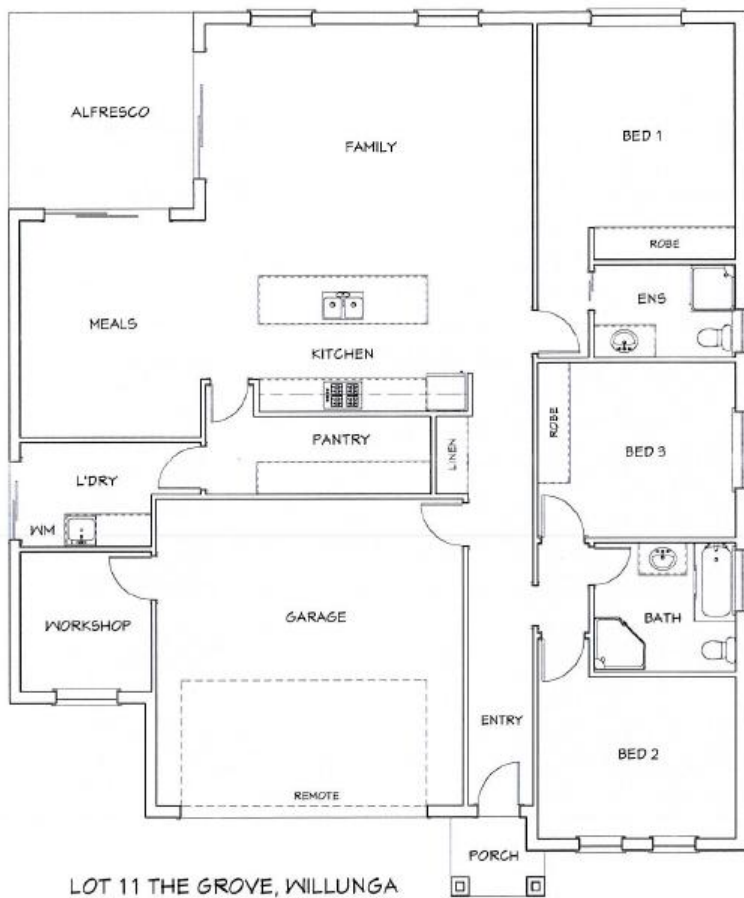


**Rossdale  
Residential  
Property Solutions**

*Because trust is a must*

# House & Land Package

## Lot 11 'The Grove' Willunga



### This package includes:

- Rossdale home with double garage including remote doors & internal workshop off garage.
- Portico to the front elevation
- Rendered front façade including portico
- Colourbond roof
- 2700m high ceilings
- Built In robes
- Alfresco living to rear
- R4.0 ceiling & R2.0 external & internal wall insulation
- Instantaneous gas HWS
- Stainless Steel kitchen appliances including overhead cupboards
- Butler's pantry
- Ducted reverse cycle air-conditioning
- TV Antenna
- Mixer taps throughout
- Floor coverings throughout
- Blinds to windows & Verticals to sliding door
- NBN package
- Termimesh perimeter treatment
- Stormwater disposal including rain water tank
- Concrete perimeter paths and driveway
- Footings allowance with all excess soil removed (subject to final engineering report)
- Land size 400m<sup>2</sup>

### HOUSE & LAND PACKAGE

FROM:

**\$475,000**

FOR THIS OFFER CALL  
**MICHAEL PENNEY**  
0422 96 96 72

Images for illustration purposes only.