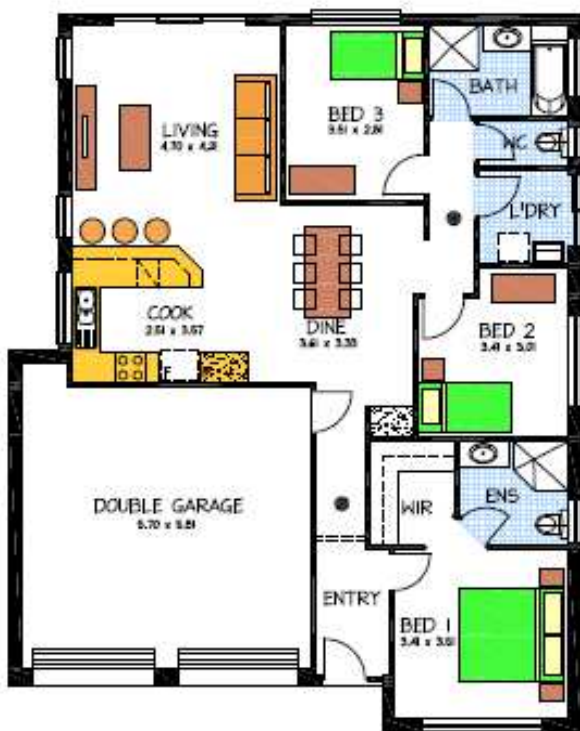


# House & Land Package



## THE BOLERO

Lot 471 Mount Torrens Road  
LOBETHAL

This package includes:

- Fantastic hills location to build your dream home
- Rossdale Homes Bolero design
- Double garage with automatic roller doors and internal access into home
- Master bedroom with Ensuite and walk in robe
- Built in robes to Bedrooms 2 + 3
- Laundry and linen cupboards included
- Quality Westinghouse appliances including retracta range-hood set in overhead cupboards
- Bushfire requirements are allowed for
- Solar electric hot water system
- Ceiling, external walls and internal walls are all insulated
- Front elevation to be rendered and painted, allows for 2 colors
- Healthy footings allowance including all soil removal from site
- 100% Absolute Fixed Price Contract
- More options available, call today to find out more

**PACKAGE FROM: \$289,500**

Disclaimer: All care has been taken in the preparation of this material. No responsibility is taken for any errors or omissions. Details are subject to change without notification. Images for illustration purposes only. E&EO.

Land component for sale by ADCOCK Real Estate RLA: 66526

FOR THIS OFFER CALL

**BRAD: 0421 940 398**

*Because trust is a must*

[www.rossdalehomes.com.au](http://www.rossdalehomes.com.au)