

House & Land Package

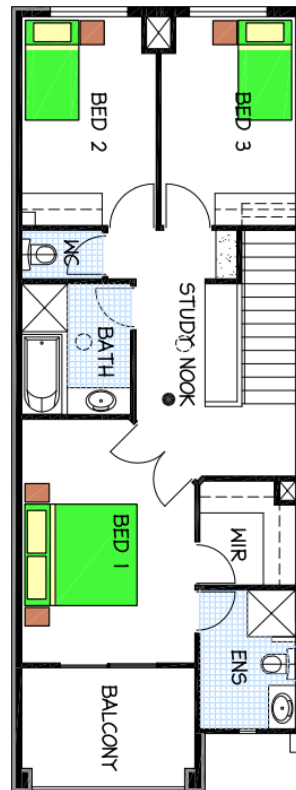


WILTSHIRE DRIVE LIGHTSVIEW SA 5085

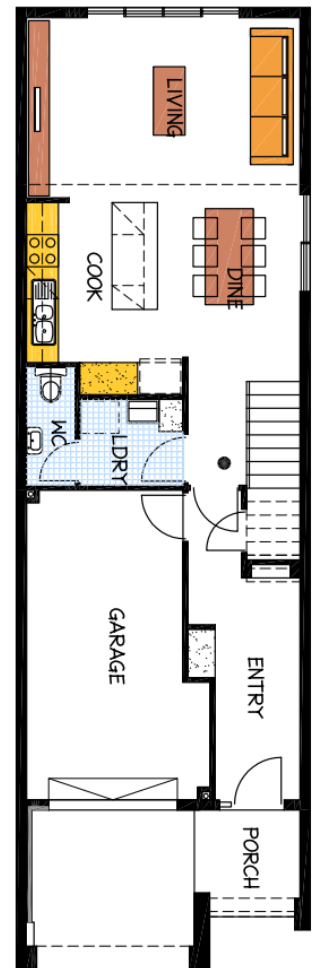
This package includes:

- Total site area is 151sqm with 5.5m frontage
- Wakefield Design to Rossdale's Sovereign Specification (total house area:173.4sqm)
- Smart design Including 3 bedrooms and 2 living areas
- 2.7m ceiling height to both floors
- Front loader garage and internal access
- WIR & Ensuite to master bedroom
- Instantaneous Hot Water System
- Optical cable network ready
- Westinghouse kitchen wares
- Standard footings allowance
- Fixed Price Quotation Including engineers footing report before signing contract
- 25 Year Structural Warranty
- Easy finance
- Show home is available for inspection
- Other designs available

UPPER FLOOR PLAN



LOWER FLOOR PLAN



HOUSE & LAND PACKAGE
FROM: \$375,929
Home: \$226,929 Land: \$149,000

Images for illustration purposes only.

FOR THIS OFFER CALL

CHEN XIE
0449 254 211

Because trust is a must
www.rossdalehomes.com.au