

House & Land Package

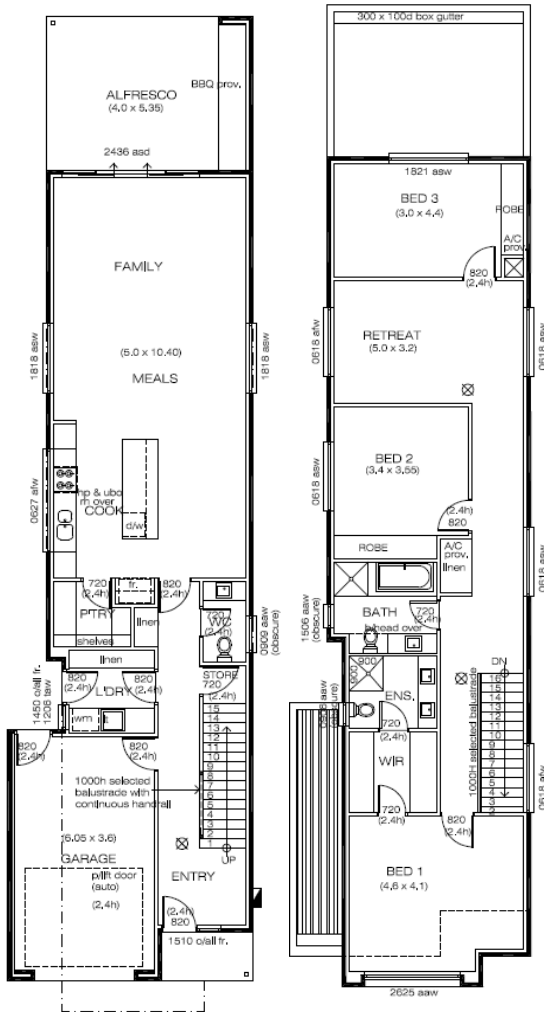


IMAGE FOR ILLUSTRATION PURPOSES

Lot 2 Mayfield Avenue, Hectorville

This package includes:

- Cleverly designed 2 storey home with strong architectural features
- Option of plan designs available - ask Guy
- Illustration would need modification of garage and width to suit land
- Cantilevered upper façade
- Full Gourmet Kitchen and Pantry with zone door to passage for Air Cond
- Extra wide garage for storage, for larger cars or easy access for family
- Bed 1 WIR and dual basin with full width vanity
- Large Bed 3 featuring 3m wide Robe, with full size rear window
- Bed 2 or large Study also with Robe for plenty of storage
- 3 sets of Linen Cupboards
- Full width Alfresco with BBQ Provision.
- Separate Powder Room to plan.
- House size 232sqm and Land size 7.4 x 42m

PACKAGE FROM: \$595,000

HOME: \$299,875 LAND: \$295,000

Disclaimer: All care has been taken in the preparation of this material. No responsibility is taken for any errors or omissions. Details are subject to change without notification. Images for illustration purposes only. E&EO.

FOR THIS OFFER CALL
GUY HENDERSON
0411 176 020
GUY@ROSSDALEHOMES.COM.AU

Because trust is a must
www.rossdalehomes.com.au