

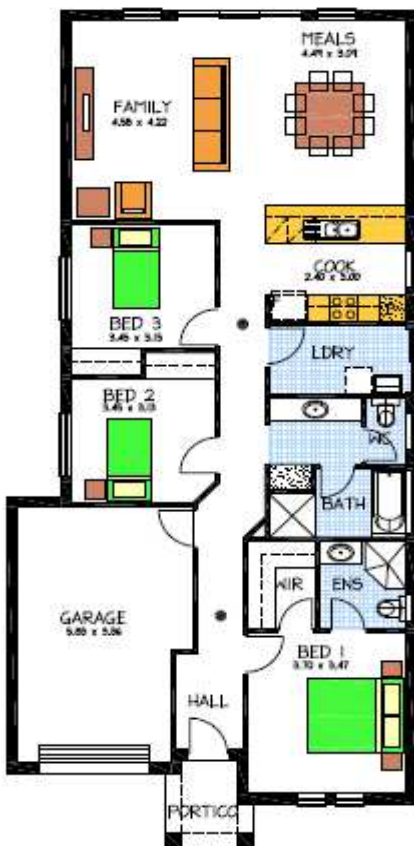
# House & Land Package



## THE MARDEN

Address 97 Daveys Road Flagstaff Hill  
This package includes:

- Rossdale Sovereign Specification
- 2.7m high ceilings
- Generous footing allowance
- Render to front elevation
- Open plan Family meals area
- Stainless steel appliances
- Robes to Bed 2 and 3
- WIR and ensuite to Bed 1
- Remote to roller door
- Located in a quiet Cul de sac
- Close to shops transport and the golf course
- Built to a Absolute Fixed Priced Contract



PACKAGE FROM: \$355,000

HOME: \$ 158,000 LAND: \$197,000

Disclaimer: All care has been taken in the preparation of this material. No responsibility is taken for any errors or omissions. Details are subject to change without notification. Images for illustration purposes only. E&EO.

FOR THIS OFFER CALL

**JOHN 0423337020**

*Because trust is a must*

[www.rossdalehomes.com.au](http://www.rossdalehomes.com.au)