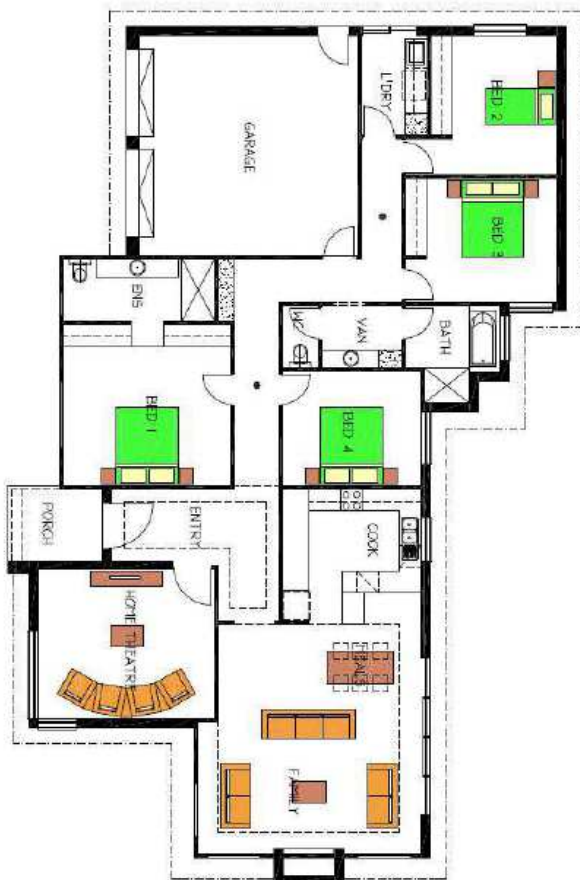




**Rossdale
Homes**

Because trust is a must

House & Land Package



THE FLAXLEY ON DISPLAY AT M BARKER

47 MATTNER ROAD, ASTON HILLS

This package includes:

- Floor Coverings
- Reverse cycle air-conditioning
- 2.7m ceiling height
- External Walls and Ceiling Insulation
- Displayed Façade
- Fireplace
- Built in Robes
- 450 x 200mm raft footing allowance

PACKAGE FROM: \$460,000

HOME: \$273,000 LAND: \$187,000

Disclaimer: All care has been taken in the preparation of this material. No responsibility is taken for any errors or omissions. Details are subject to change without notification. Images for illustration purposes only. E&EO.

FOR THIS OFFER CALL

TIFFANY: 0422 072 598

Because trust is a must

www.rossdalehomes.com.au