

House & Land Package



THE MARDEN

Lot 202 No 6A Irving Rd Aldinga Beach

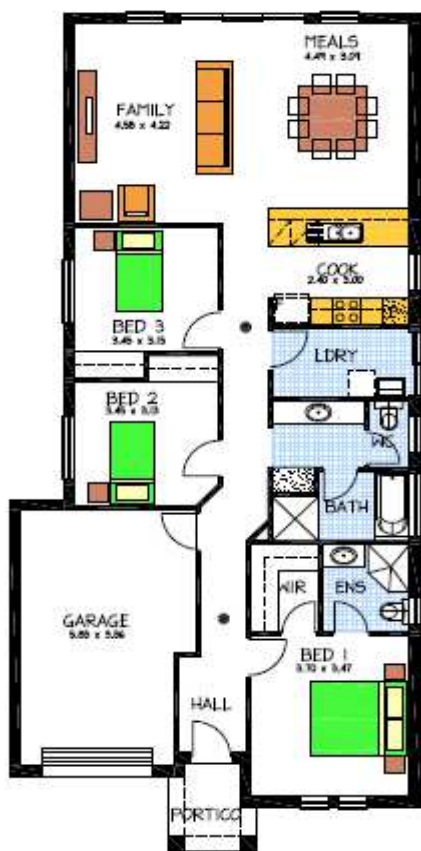
This package includes:

- Rosssdale Homes Marden design built to Select Specifications
- Single garage with Auto roller door & internal access into home
- Front elevation with feature Portico, rendered and painted allowing 2 colors and feature front door
- Master bedroom with Ensuite and walk in robe
- Bedrooms 2 and 3 with built in robes, Laundry cupboards
- Quality Westinghouse appliances with retracta range-hood set in overhead cupboards and instantaneous hot water system
- Ceiling, External walls and internal walls are all insulated
- All services are included along with NBN wiring for fast internet
- Healthy footings allowance with all excess soil removed
- 25 Year Structural Warranty
- 100% Absolute Fixed Price Contract with no hidden costs

More options available for this package, call now to find out more

PACKAGE FROM: \$315,000

Disclaimer: All care has been taken in the preparation of this material. No responsibility is taken for any errors or omissions. Details are subject to change without notification. Images for illustration purposes only. E&EO.



FOR THIS OFFER CALL

BRAD: 0421 940 398

Because trust is a must

www.rossdalehomes.com.au