

House & Land Package

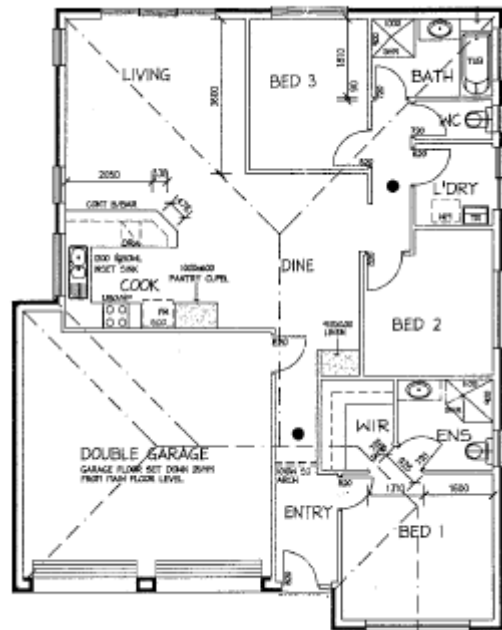
Do you pay too much tax? Want to create a better lifestyle for your retirement? Act now!

**Now with
lifetime
rental
guarantee!**

LOT 8 THE GROVE, WILLUNGA "EVELYN ESTATE"

This package includes:

- **Lifetime Rental Guarantee.**
- Modern brick veneer home comprising 3 bedrooms and a double garage with roller doors and remote control.
- Open plan cook/dine/living rooms.
- Spacious master bedroom with ensuite and walk in robe.
- Built in robes to second and third bedrooms.
- 6 Star energy rating; fully insulated & air conditioning system.
- Quality floor coverings throughout.
- Light fittings and window-dressings throughout.
- Low maintenance landscaping with irrigation.
- All fencing, paving and gates.
- Undercover pergola.
- **2 year Garden Maintenance Guarantee.**
- Home has been carefully designed to achieve the maximum depreciation benefits and tenant appeal to maximise your investment.
- Fully turnkey, no more work for you to do, right down to the letterbox!



Images for illustration purposes only.

FOR THIS OFFER CALL

DANIEL FRENCH 0411 275 210