



**Rossdale
Residential
Property Solutions**

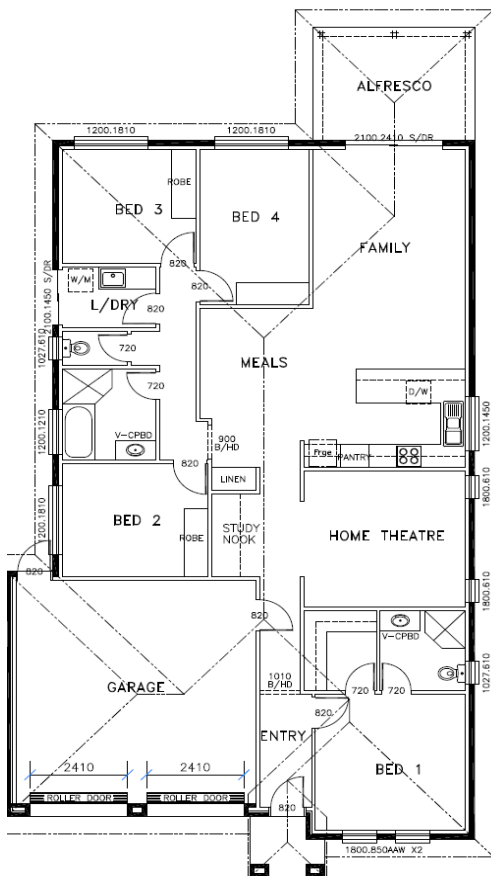
Because trust is a must

House & Land Package



Images for illustration purposes only.

6 LONGVIEW ROAD TWO WELLS



This package includes:

- 4 bedroom home with double panel lift garage door, including remote doors & internal access into home
- Alfresco to rear
- 2700mm high ceilings
- Colorbond roof
- Robes to bedrooms 2 & 3
- Gloss kitchen
- Stainless steel kitchen appliances
- Mixer tapware throughout
- Ducted reverse cycle Air-conditioning
- Floor coverings throughout
- Instantaneous gas HWS
- R4.0 ceiling insulation & R2.0 external wall insulation
- Termi mesh termite barrier to perimeter
- Rainwater tank
- Storm water disposal
- Paving to perimeter and driveway
- Footings allowance with all excess soil removed (subject to final engineering report)
- Land Size: 1000m²

FOR THIS OFFER CALL

MICHAEL PENNEY

0422 96 96 72

HOUSE & LAND PACKAGE

FROM: \$419,000