

# House & Land Package



## THE MARDEN

Lot 1226 Jollies Crt Seaford Meadows

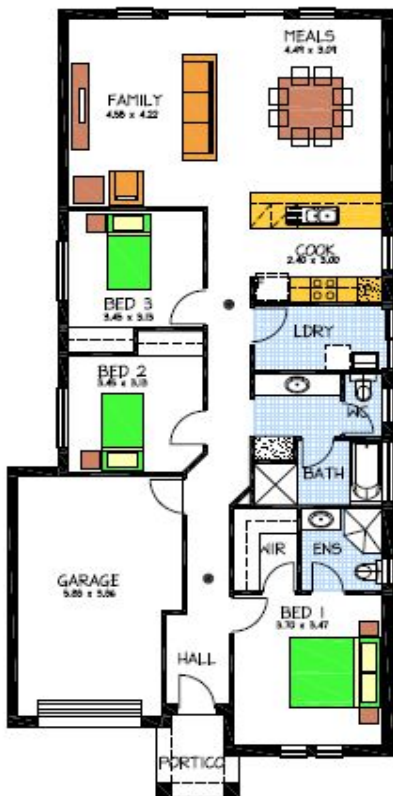
This package includes:

- Rossdale Homes Marden design built to Select Specifications
- Single garage with Auto roller door & internal access into home
- Front elevation with feature Portico, rendered and painted allowing 2 colors and feature front door
- Master bedroom with Ensuite and walk in robe
- Bedrooms 2 and 3 with built in robes
- Quality Westinghouse appliances with retracta range-hood set in overhead cupboards
- Ceiling, External walls and internal walls are all insulated
- All services are included along with NBN wiring for fast internet
- Healthy footings allowance with all excess soil removed
- 25 Year Structural Warranty
- 100% Absolute Fixed Price Contract with no hidden costs

More options available for this package, call now to find out more

**PACKAGE FROM: \$339,000**

Disclaimer: All care has been taken in the preparation of this material. No responsibility is taken for any errors or omissions. Details are subject to change without notification. Images for illustration purposes only. E&EO.



FOR THIS OFFER CALL

**BRAD: 0421 940 398**

*Because trust is a must*

[www.rossdalehomes.com.au](http://www.rossdalehomes.com.au)