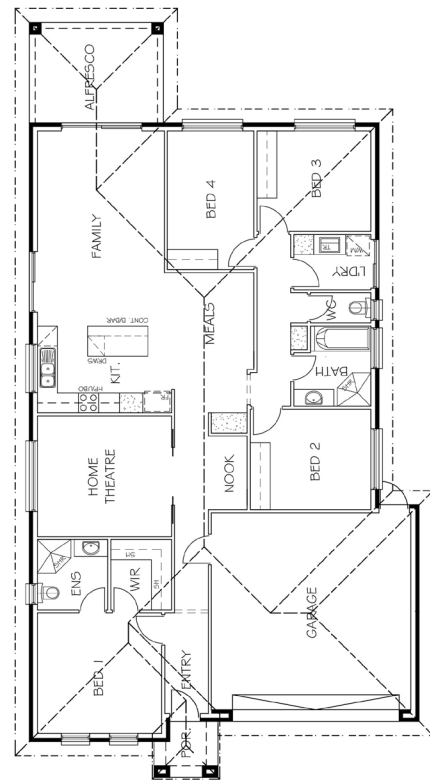




Lot 35 No.6 Heading Street, Goolwa North House & Land Package From: \$570,000

This package includes:

- ▶ 4 Bedrooms with Double Garage, 2 separate living areas with study nook
- ▶ Alfresco under the main roof
- ▶ Render to front portico
- ▶ 2700mm ceiling throughout
- ▶ Remote Panel Garage Door
- ▶ Rendered front Portico
- ▶ Perimeter Termi-mesh to the house
- ▶ R5.0 ceiling insulation the living areas, Garage & Alfresco
- ▶ R2.0 Internal & External wall insulation
- ▶ Colourbond roof
- ▶ Roof ventilator (Whirlybird)
- ▶ Built in robes to bedrooms 2, 3 & 4
- ▶ Semi Frameless shower screens
- ▶ Ducted Reverse cycle Air-Conditioning
- ▶ Electric Heat Pump Hot Water Service
- ▶ Floor coverings throughout
- ▶ Tiling to the front Portico
- ▶ NBN Package
- ▶ TV Antenna
- ▶ Downlight Package
- ▶ Spray on waterproofing membrane to the edge of the slab
- ▶ Stormwater Disposal & Footing allowance to be confirmed by the final Engineers Report



Disclaimer: All care has been taken in the preparation of this material. No responsibility is taken for any errors or omissions. Details are subject to change without notification. Images for illustration purposes only. E&EO.

Call Michael Penney
0422 969 672
mpenney.rps@rossdalehomes.com.au

Because trust is a must